

6 SEDUM Linn. (Crassulaceae)

SPECIES COVERED

S. adenotrichum Wall. ex Edgew.

S. crassipes Wall. ex Hook. f. & Thomson syn. *S. asiaticum* DC.; *S. wallichianum* Hook.

S. ewersii Ledeb.

S. heterodontum Hook. f. & Thomson

S. linearifolium Royle var. *sinuatum* (Royle ex Edgew.) Raym.- Hamet

S. multicaule Wall. ex Lindl.

S. trullipetalum Hook. f. & Thomson

OTHER ASPECTS COVERED

Habit and habitat

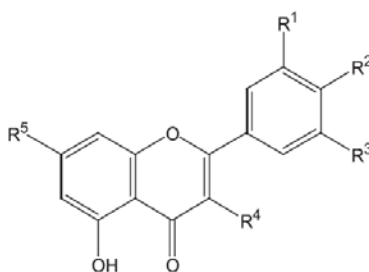
Properties and uses ascribed

Ethnobotanical studies

Chemical studies

Pharmacological and biological studies

Certain Constituents of *Sedum* Species



Kaempferol-3,7-di-*O*-glucoside R¹ = R³ = H, R² = OH, R⁴ = R⁵ = *O*-glucose
Laricitrin R¹ = OCH₃, R² = R³ = R⁴ = R⁵ = OH