

# 36 SMILAX Linn. (Smilacaceae)

## SPECIES COVERED

*S. aspera* Linn. syn. *S. rigida* Sol. ex Sm.

*S. china* Linn. var. *china*

*S. elegans* Wall. ex Kunth syn. *S. glaucophylla* Klotzsch; *S. parvifolia* Wall. ex Hook.f.

*S. glabra* Roxb.

*S. lanceifolia* Roxb.

*S. menispermoides* A. DC.

*S. munita* S. C. Chen. syn. *S. rigida* Wall. ex Kunth.

*S. ovalifolia* Roxb. ex D. Don syn. *S. macrophylla* Roxb.

*S. perfoliata* Lour. syn. *S. prolifera* Roxb.

*S. wightii* A. DC.

*S. zeylanica* Linn.

## OTHER ASPECTS COVERED

Regional and Other Names

Habit and Habitat

Ayurvedic Description Properties and Uses Ascribed

Therapeutic Uses Mentioned in Ayurvedic Pharmacopoeia

Properties and Uses Ascribed

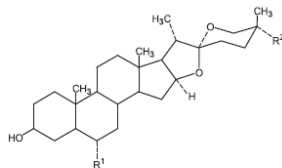
Ethnobotanical Studies

Pharmacognostic Studies

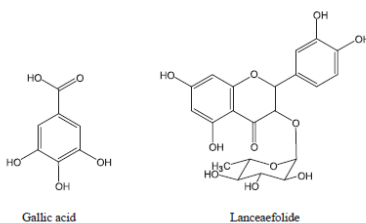
Chemical Studies

Pharmacological and Biological Studies

## Certain Constituents of *Smilax* Species



Asperagenin  $R_1 = R_2 = \text{OH}$   
Sarsasapogenin  $R_1 = R_2 = \text{H}$



Gallic acid

Lanceaeifolide