

# 25 SIDA Linn. (Malvaceae)

## SPECIES COVERED

**S. acuta** Burm.f. syn. *S. carpinifolia* Linn. f

**S. alnifolia** Linn. var. **alnifolia** Linn. syn. *S. rhombifolia* Linn. ssp. *retusa* (Linn.) Mast.; *S. retusa* Linn.

**S. cordata** (Burm.f.) Borss. Waalk. syn. *S. veronicifolia* Lamk.; *S. humilis* Cav.

## OTHER ASPECTS COVERED

Regional and Other Names

Habit and Habitat

Ayurvedic Description Properties and Uses Ascribed

Ethnobotanical Studies

Pharmacognostic Studies

Chemical Studies

Pharmacological and Biological Studies

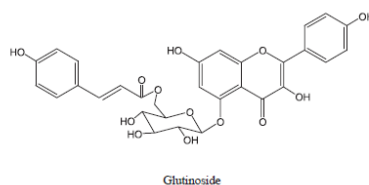
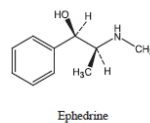
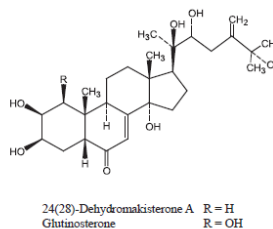
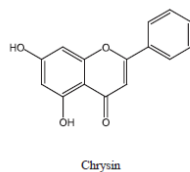


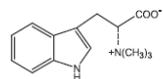
*S. acuta* Burm.f.



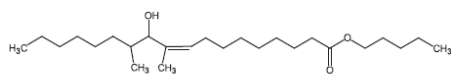
*S. cordifolia* Linn.

## Certain Constituents of *Sida* Species





Hypaphorine



Pentyl-10,12-dimethyl-11-hydroxyoleate