

# 21SETARIA Pal. (Poaceae)

## SPECIES COVERED

***S. glauca*** (Linn.) P. Beauv.

***S. intermedia*** Roem. & Schult. syn. *S. tomentosa* (Roxb.) Kunth

***S. italica*** (Linn.) P. Beauv. syn. *Panicum italicum* Linn.

***S. pumila*** (Poir.) Roem. & Schult. syn. *S. pallide-fusca* (Schumach.) Stapf & C. E. Hubb.

***S. sphacelata*** (Schumach.) Stapf & C.E. Hubb. ex Moss

***S. verticillata*** (Linn.) P. Beauv.

***S. viridis*** (Linn.) P. Beauv.

## OTHER ASPECTS COVERED

Regional and other names

Habit and habitat

Properties and uses ascribed

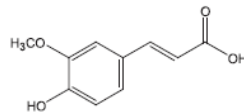
Ayurvedic Description Ethnobotanical studies

Pharmacognostic studies

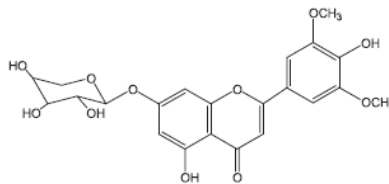
Chemical studies

Pharmacological and biological studies

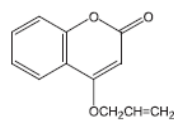
Certain Constituents of *Setaria* Species



Ferulic acid



Setaricin



Setarin