

# 14 SENNA Miller (Fabaceae)

## SPECIES COVERED

- S. alata* (Linn.) Roxb. syn \**Cassia alata* Linn.  
*S. alexandrina* Mill. syn. *S. alexandrina* Garsault; *Cassia senna* Linn.; *C. angustifolia* Vahl; *C. acutifolia* Delile  
*S. atomaria* (Linn.) H. S. Irwin & Barneby syn. *Cassia atomaria* Linn.  
*S. auriculata* (Linn.) Roxb. syn. \*\**Cassia auriculata* Linn.  
*S. didymobotrya* (Fresen.) H. S. Irwin & Barneby  
*S. obtusifolia* (Linn.) H. S. Irwin & Barneby syn. \*\*\**Cassia obtusifolia* Linn.  
*S. occidentalis* (Linn.) Link syn. \*\*\*\**Cassia occidentalis* Linn.; *C. occidentalis* (Linn.) Rose  
*S. siamea* (Lamk.) H. S. Irwin & Barneby syn. <sup>D</sup>*Cassia siamea* Lamk.  
*S. sophora* (Linn.) Roxb. syn. <sup>DD</sup>*Cassia sophora* Linn.  
*S. spectabilis* (DC.) H. S. Irwin & Barneby  
*S. surattensis* (Burm.f.) H. S. Irwin & Barneby  
*S. tora* (Linn.) Roxb. syn. <sup>DDD</sup>*Cassia tora* Linn. f.  
*S. uniflora* (Mill.) H. S. Irwin & Barneby syn. *Cassia uniflora* Mill.

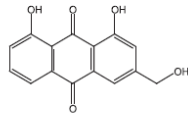
## OTHER ASPECTS COVERED

- Habit and habitat
- Properties and uses ascribed
- Ethnobotanical studies
- Pharmacognostic studies
- Chemical studies
- Pharmacological and biological studies

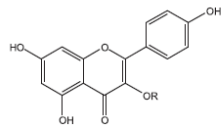


*S. tora* (Linn.) Roxb.

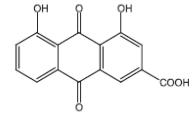
Certain Constituents of *Senna* Species



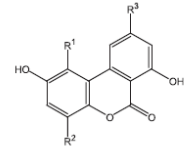
Aloe emodin



Kaempferol R = H  
Kaempferol 3-O-gentiobioside R = gentiobiose



Rhein



Sopherone A R<sup>1</sup> = R<sup>2</sup> = H, R<sup>3</sup> = CH<sub>3</sub>  
Sopherone B R<sup>1</sup> = COOCH<sub>3</sub>, R<sup>2</sup> = H, R<sup>3</sup> = CH<sub>3</sub>