

13 **SENECIO** Linn. (**Asteraceae**)

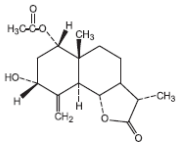
SPECIES COVERED

- S. alatus*** Wall. ex DC.
- S. amplexicaulis*** Kunth.
- S. arnicoides*** Wall. ex C. B. Clarke
- S. belgaumensis*** (Wight) C. B. Clarke
- S. bombayensis*** N. P. Balakr. syn *S. grahamii* Hook.f.
- S. candicans*** Wall. ex DC.
- S. candidans*** DC.
- S. chenopodifolius*** DC.
- S. chrysanthemoides*** DC.
- S. corymbosus*** Wall. ex DC.
- S. densiflorus*** Wall.
- S. graciliflorus*** (Wall.) DC.
- S. jacquemontianus*** (Decne.) Benth. ex Hook. f.
- S. krascheninnikovii*** Schischk.
- S. kunthianus*** Wall. ex DC.
- S. laetus*** Edgew.
- S. linifolius*** (Linn.) Linn.
- S. nudicaulis*** Buch.-Ham. ex D. Don
- S. quinquelobus*** (Thunb.) DC.
- S. raphanifolius*** Wall. ex DC. syn. *S. diversifolius* Wall. ex DC.; *Jacobaea raphanifolia* (Wall. ex DC.) B. Nord
- S. royleanus*** DC.
- S. rufinervis*** DC.
- S. tenuifolius*** Burm. f.
- S. vulgaris*** Linn.

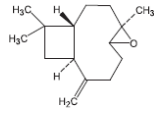
OTHER ASPECTS COVERED

- Regional and other names
- Habit and habitat
- Properties and uses ascribed
- Ethnobotanical studies
- Pharmacognostic studies
- Chemical studies
- Pharmacological and biological studies

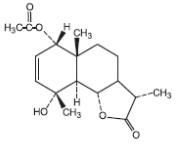
Certain Constituents of *Senecio* Species



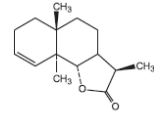
1-Acetylervanin



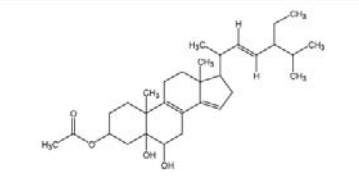
Caryophyllene oxide



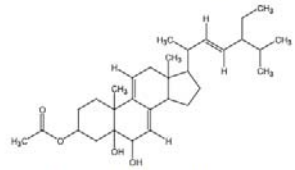
Chrysanthemolide



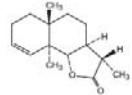
Demethyl-1,6,7,11,12,13,16,17-dodecalhydro-5,6-dihydroxy-10,13-dimethyl-1H-cyclopentaphenanthren-3-yl acetate



(5-Ethyl-6-methylhept-3-en-2-yl)-(2,3,4,5,6,7,10,11,12,13,16,17-dodecalhydro-5,6-dihydroxy-10,13-dimethyl-1H-cyclopentaphenanthren-3-yl) acetate



(5-Ethyl-6-methylhept-3-en-2-yl)-(2,3,4,5,6,10,12,13,16,17-dodecalhydro-5,6-dihydroxy-10,13-dimethyl-1H-cyclopentaphenanthren-3-yl) acetate



Valerolactone

