

15 PHYTOLACCA Linn. (Phytolaccaceae)

SPECIES COVERED

- P. acinosa*** Roxb. syn. *Pircunia esculenta* Moq.
P. americana Linn. syn. *P. decandra* Linn.
P. dioica Linn. syn. *Pircunia dioica* (Linn.) Moq.
P. octandra Linn.

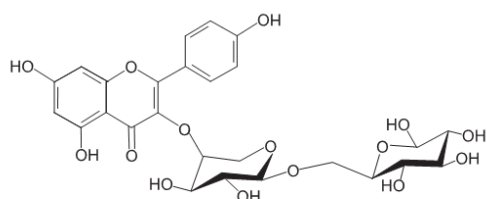


P. americana Linn.

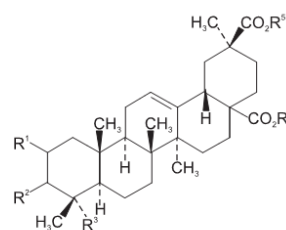
OTHER ASPECTS COVERED

- Regional and Other Names
- Habit and Habitat
- Properties and Uses Ascribed
- Ethnobotanical Reports
- Pharmacognostic Studies
- Chemical Studies
- Pharmacological and Biological Studies
- Clinical Studies

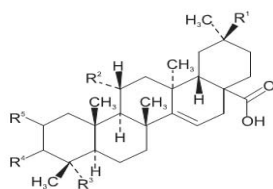
Certain Constituents of *Phytolacca* Species



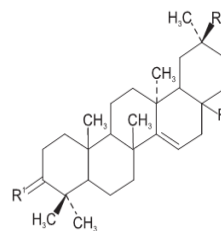
Kaempferol-3-*O*- α -L-arabinopyranosyl(1 \rightarrow 6)- β -D-galactopyranoside



- | | |
|----------------------|--|
| Acinosolic acid A | $R^1 = \beta$ OH, $R^2 = \beta$ OAc, $R^3 = R^5 = H$, $R^4 = CH_3$ |
| Acinosolic acid B | $R^1 = \beta$ OAc, $R^2 = \beta$ OH, $R^3 = R^5 = H$, $R^4 = CH_3$ |
| Isophytolaccagenin A | $R^1 = R^2 = R^3 = OAc$, $R^4 = CH_3$, $R^5 = H$ |
| Isophytolaccagenin A | $R^1 = R^5 = H$, $R^2 = R^3 = OAc$, $R^4 = CH_3$ |
| Phytolaccagenin A | $R^1 = \beta$ OH, $R^2 = \beta$ OAc, $R^3 = OH$, $R^4 = H$, $R^5 = Cl$ |
| Spergulagenic acid A | $R^1 = R^3 = R^4 = H$, $R^2 = OAc$, $R^5 = CH_3$ |



- Acinospesigenin A $R^1 = CH_3$, $R^2 = OH$, $R^3 = CH_2 OH$, $R^4 = OAc$, $R^5 = H$
 Acinospesigenin B $R^1 = CO_2CH_3$, $R^2 = H$, $R^3 = CHO$, $R^4 = R^5 = OH$
 Acinospesigenin C $R^1 = CO_2CH_3$, $R^2 = R^4 = R^5 = OH$, $R^3 = CHO$



- Phytolaccanol $R^1 = \alpha$ -OAc, β -H, $R^2 = CH_3$, $R^3 = CH_2OH$
 Epiacetylaleuritic acid $R^1 = \alpha$ -OAc, β -H, $R^2 = COOH$, $R^3 = CH_3$