

12 *PHYSALIS* Linn. (Solanaceae)

SPECIES COVERED

P. alkekengi Linn.

P. angulata Linn. syn. *P. lanceifolia* Nees

P. ixocarpa Brot. ex Hornem.

P. minima Linn.

P. peruviana Linn. syn. *P. tomentosa* Medik.

P. pubescens Linn.



P. angulata Linn.



P. peruviana Linn.

OTHER ASPECTS COVERED

Regional and Other Names

Habit and Habitat

Ayurvedic Description

Therapeutic Uses Mentioned in Ayurvedic Pharmacopoeia

Properties and Uses Ascribed

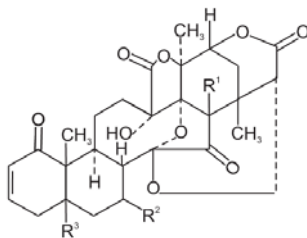
Ethnobotanical Reports

Pharmacognostic Studies

Chemical Studies

Pharmacological and Biological Studies

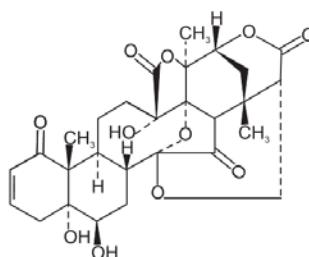
Certain Constituents of *Physalis* Species



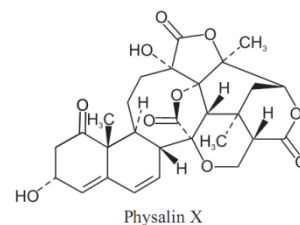
Physalin B R¹ = CH₃, R² = R³ = H

Physalin E R¹ = CH₃, R² = R³ = --OH

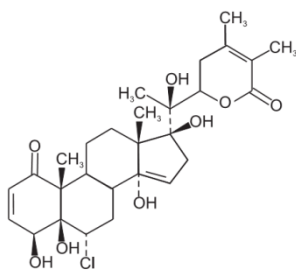
Physalin H R¹ = R² = H, R³ = OH



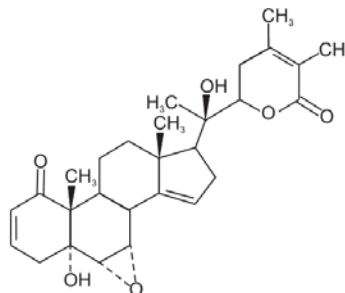
Physalin D



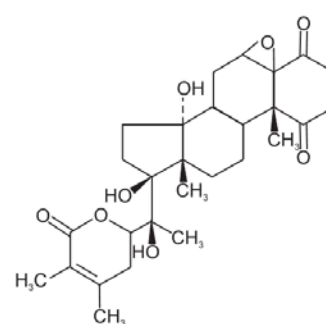
Physalin X



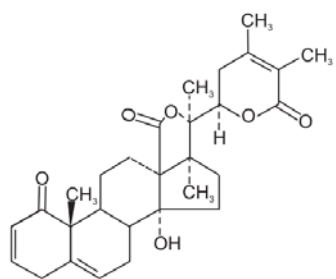
Physalolactone C



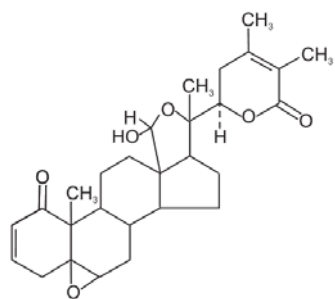
Withanolide A



Withaperuvin E



Withaphysalin A



Withaphysalin B