

6 PHYLA Lour. (Verbenaceae)

SPECIES COVERED

P. nodiflora (Linn.) Greene syn. #*Lippia nodiflora* (Linn.) A. Rich.

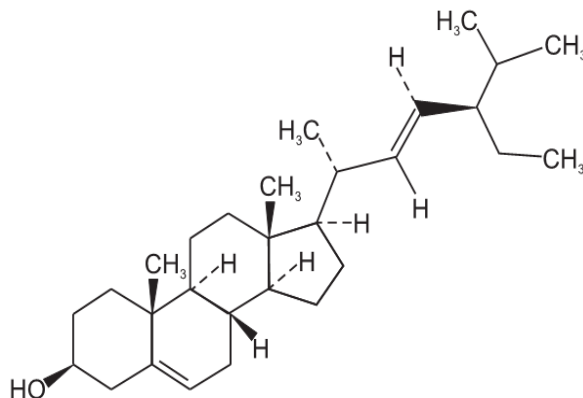
OTHER ASPECTS COVERED

Regional and Other Names
Habit and Habitat
Ethnobotanical Reports
Pharmacognostic Studies
Chemical Studies
Pharmacological and Biological Studies

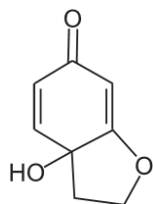


P. nodiflora (Linn.) Greene

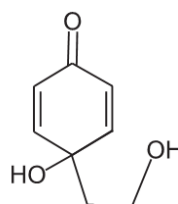
Certain Constituents of *Phaseolus* Species



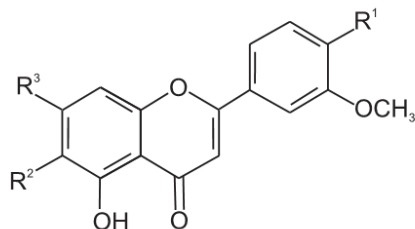
(3*S*,8*S*,9*S*,10*R*,13*R*,14*S*,17*R*)-17-[(*E*,2*S*,5*S*)-5-Ethyl-6-methylhept-3-en-2-yl]-10,13-dimethyl-2,3,4,7,8,9,11,12,14,15,16,17-dodecahydro-1*H*-cyclopenta[*a*]phenanthren-3-ol



Halleridone



Hallerone



5-Hydroxy-3',4',7-trimethoxyflavone
Nodifloretin

$R^1 = R^3 = \text{OCH}_3$, $R^2 = \text{H}$
 $R^1 = R^2 = R^3 = \text{OH}$