

3 PHOLIDOTA Lindl. ex Hook. (Orchidaceae)

SPECIES COVERED

P. articulata Lindl. syn. *P. griffithii* Hook. f.

P. imbricata Lindl.

P. protracta Hook. f.

P. rubra Lindl.

OTHER ASPECTS COVERED

Habit and Habitat

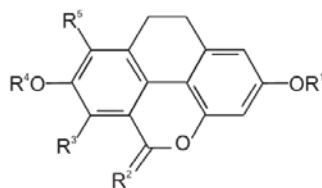
Ethnobotanical Reports

Pharmacognostic Studies

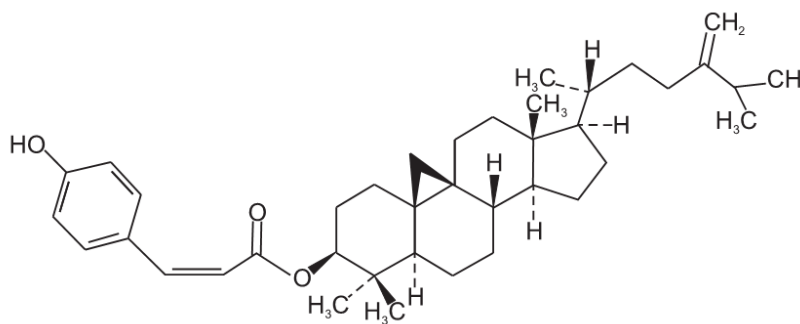
Chemical Studies

Pharmacological and Biological Studies

Certain Constituents of *Pholidota* Species



Flaccidin	$R^1 = R^5 = H, R^2 = H_2, R^3 = OH, R^4 = CH_3$
Flavidin	$R^1 = R^3 = R^4 = R^5 = H, R^2 = H_2$
Imbricatin	$R^1 = R^4 = R^5 = H, R^2 = H_2, R^3 = OCH_3$
Isoflavidinin	$R^1 = CH_3, R^2 = H_2, R^3 = R^4 = R^5 = H$
Iso-oxoflavidinin	$R^1 = CH_3, R^2 = O, R^3 = R^4 = R^5 = H$
Oxoflavidin	$R^1 = R^3 = R^4 = R^5 = H, R^2 = O$



Pholidotin