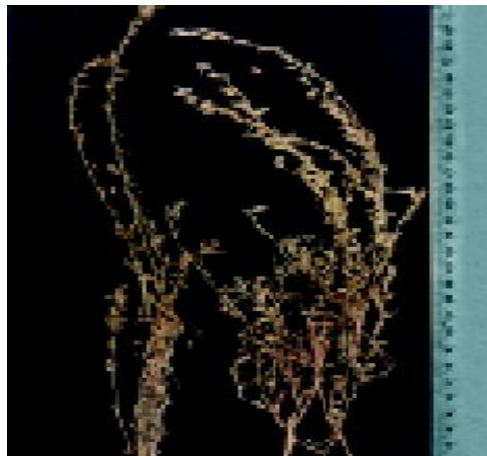


## 9 *Convolvulus microphyllus* Sieb.ex Spreng.(Śankhapuṣpi)

Drug consists of dried whole plant of *Convolvulus microphyllus* Sieb. ex Spreng. (A & B) (syn. *C. pluricaulis* Choisy); Fam. Convolvulaceae. It is a prostrate, sub-erect, spreading, hairy, perennial herb with a woody rootstock, found throughout India, in plains.



A. Aerial twig of the plant



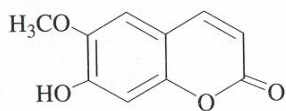
B. Dried aerial parts

*Convolvulus microphyllus* Sieb. ex Spreng.

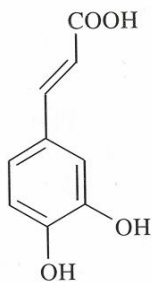
### Chemical Constituents

#### Major

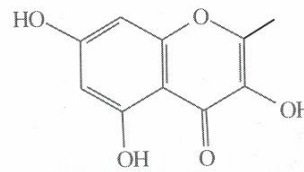
Scopoletin, kaempferol-3-glucoside, kaempferol, 3,4-dihydroxycinnamic acid.



Scopoletin

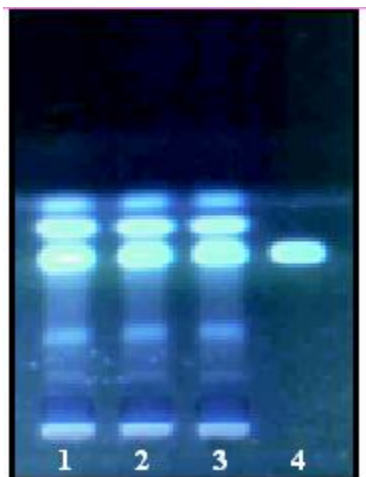


3,4-Dihydroxy cinnamic acid



Kaempferol

## TLC/ HPLC Details



TLC profile of test solution of  
*Convolvulus microphyllus* whole plant extract.  
**1-3** : Test solution; **4** : Scopoletin standard.