

9 *Cassia tora* Linn.

(Cakramarda)

Drug consists of dried seed of *Cassia tora* Linn. (A, B & C); Fam. Caesalpiniaceae. It is an annual weed growing as a undershrub and found on road sides and wastelands in the wild state, ascending to 1500m throughout the country and in the tropics.



A. Flowering and fruiting branch



B. Fruits and seeds

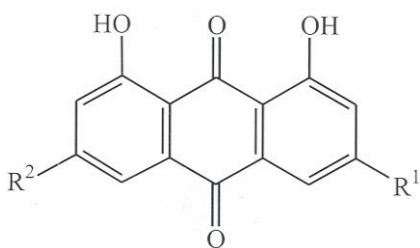


C. Enlarged view of seeds
Cassia tora Linn.

Chemical Constituents

Major

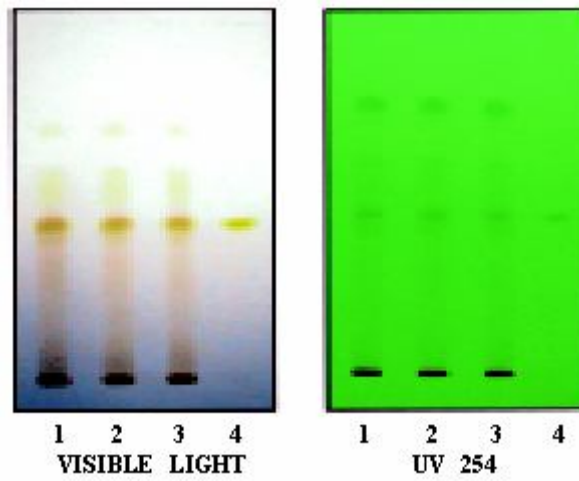
Fatty acids: palmitic, stearic, lignoceric, oleic, linoleic and anthraquinones such as rhein, aloe-emodin, emodin.



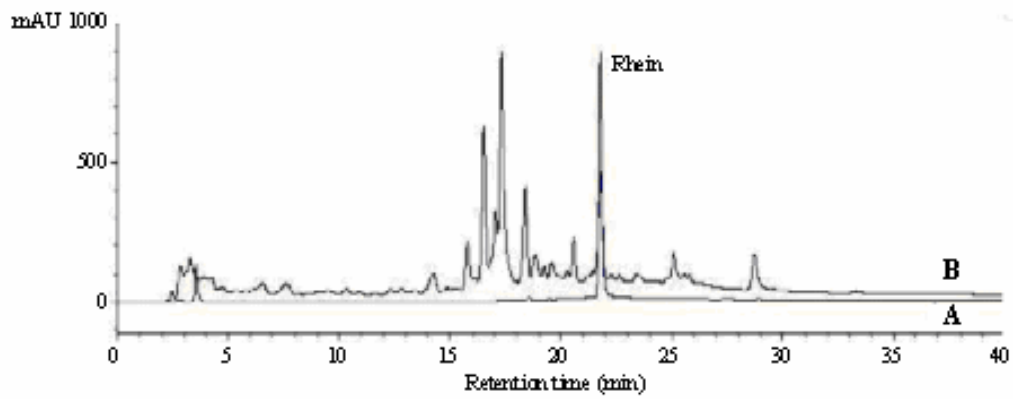
Aloe-emodin
Chrysophanol
Emodin
Physcion
Rhein

R ¹	R ²
CH ₂ OH	H
CH ₃	H
CH ₃	OH
CH ₃	OCH ₃
COOH	H

HPTLC/HPLC Details



HPTLC profile of methanolic extract of *Cassia tora* seed.
1-3: Test solution; 4: Rhein standard.



HPLC chromatogram at 254 nm.
A. Rhein standard; B. Test solution of methanolic extract of *Cassia tora* seed.