

## 9 *Berberis aristata* DC. var. *aristata* (Daru haridra)

Drug consists of dried stem of *Berberis aristata* DC. var. *aristata* (Plate 9.1 A & B); Fam. Berberidaceae. It is an erect, spinous, deciduous shrub usually 1.8 to 3.6 m high, found in Himalayas at an altitude of 1000-3000 m and in the Nilgiri hills in South India, altitude, 1000–2400 m.



A. Aerial branch



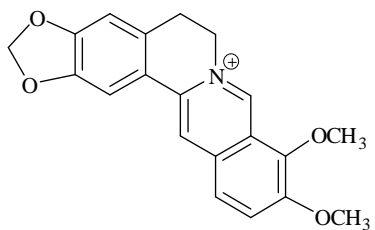
B. Dried stem pieces

Plate 9.1 *Berberis aristata* DC. var. *aristata*

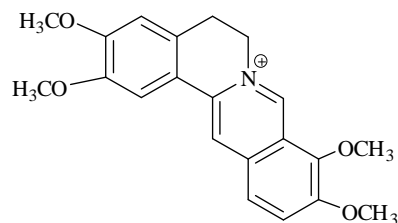
### Chemical Constituents

#### Major

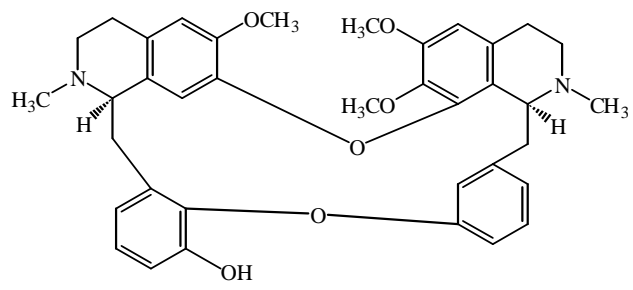
Berberine, palmatine, oxyberberine, oxyacanthine



Berberine



Palmatine



Oxyacanthine