

9 *Elaeocarpus sphaericus* (Gaertn.) K. Schum. (Rudrakṣa)

Drug consists of the stony intact endocarp of the dried mature fruit (containing seeds inside) of *Elaeocarpus sphaericus* (Gaertn.) K. Schum. (syn. *E. ganitrus* Roxb. ex G. Don; *Ganitrus sphaericus* Gaertn.) (A, B & C); Fam. Elaeocarpaceae. A medium sized tree; found in the lower Himalayas and in the Western Ghats between 1500 to 2000 m .



A. Tree



B. Fresh, dried fruits and stony tubercled pyrenes



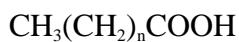
C. Seeds

Elaeocarpus sphaericus (Gaertn.) K. Schum.

Chemical Constituents

Major

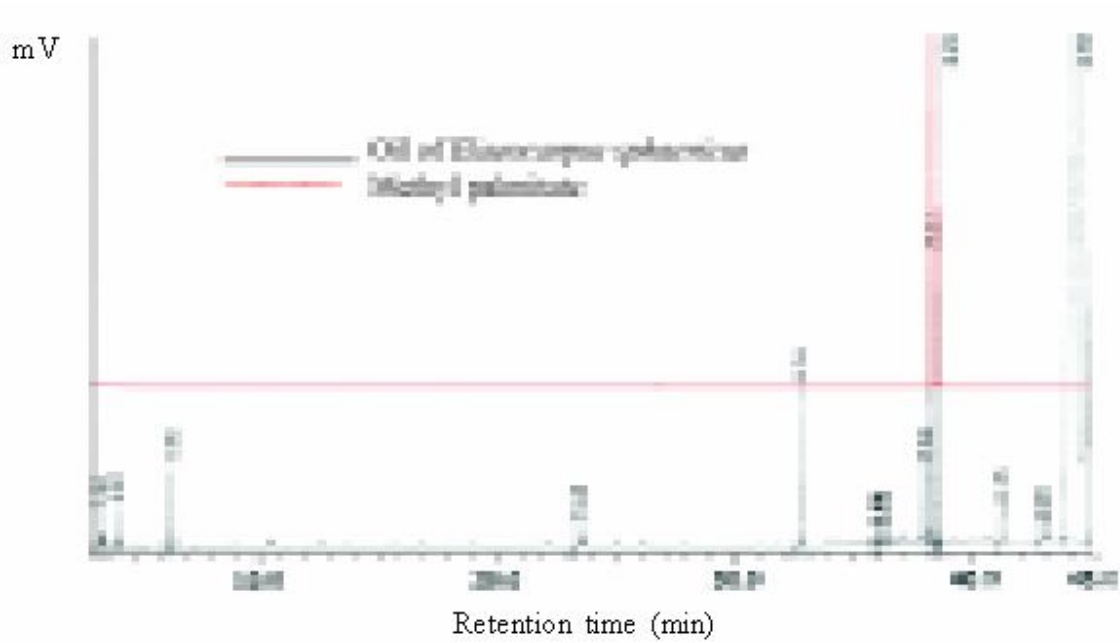
Palmitic acid, stearic acid.



Palmitic acid, n = 14

Stearic acid, n = 16

GLC Details



GLC fingerprint profile of the methylated fatty acids of *Elaeocarpus sphaericus* fruit along with methyl palmitate as reference.