

8 *Dillenia indica* Linn.

(Bhavya)

Drug consists of the dried, transversely cut slices of the fleshy sepals of fruit of *Dillenia indica* Linn. (A, B & C); Fam. Dilleniaceae. An evergreen tree, 10 to 25 m in height and 1.5 to 2 m in girth; found in the moist and evergreen forests of the sub-Himalayan tracts and sub-tropical forests in the Western Peninsular region.



A. Tree



B. Fruit



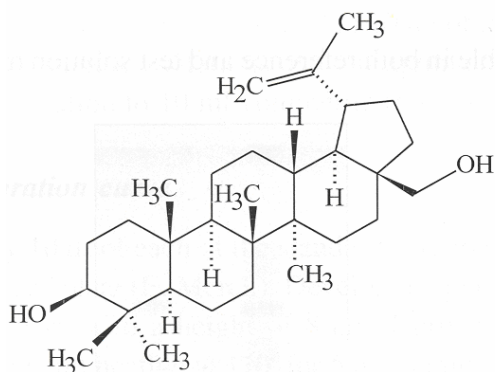
C. Cut pieces of sepals

Dillenia indica Linn.

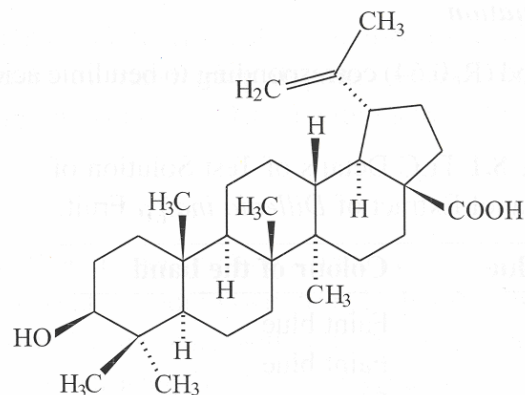
Chemical Constituents

Major

Betulin, betulinic acid.

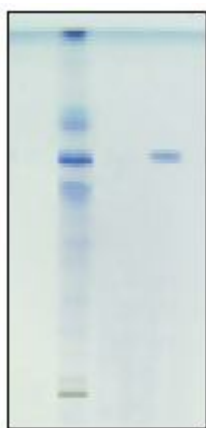


Betulin

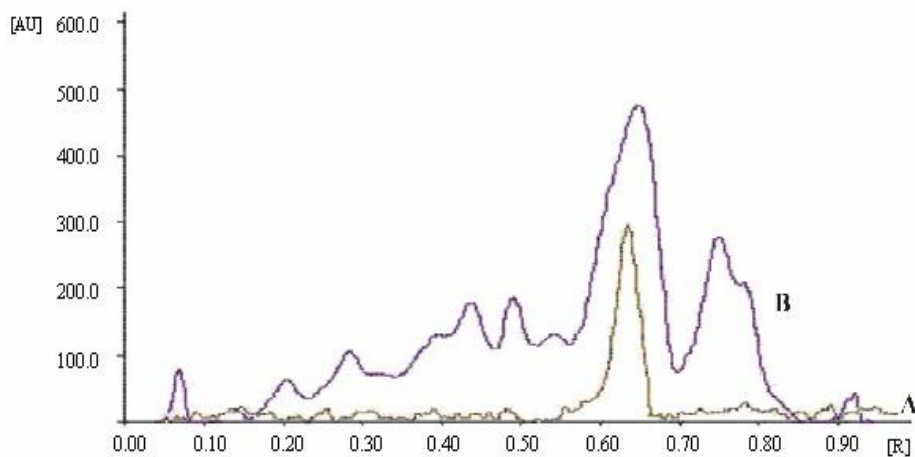


Betulinic acid

TLC/HPTLC Details



TLC profile of test solution of methanol extract of *Dillenia indica* fruit. **1:** Test solution; **2:** Betulinic acid standard.



HPTLC densitometric scan at 652 nm. **A.** Betulinic acid standard; **B.** Test solution of methanol extract of *Dillenia indica* fruit.