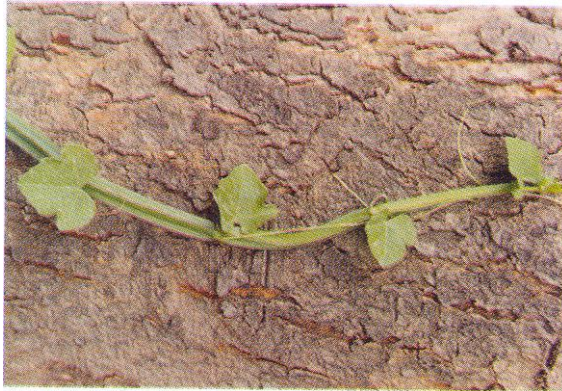


## 8 *Cissus quadrangularis* Linn. (Asthisamhrta)

Drug consists of dried stem of *Cissus quadrangularis* Linn. (A & B) (syn. *Vitis quadrangularis* Wall. ex Wight & Arn.)<sup>1</sup>; Fam. Vitaceae. It is a long, slender, fleshy climber with jointed stem, leaf and tendrils, growing along hedges and distributed throughout the hotter parts of India.



A. Stem and leaves



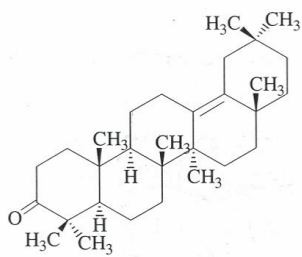
B. Dried pieces of stem

*Cissus quadrangularis* Linn.

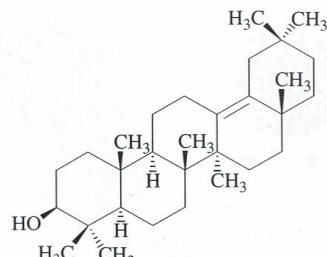
### Chemical Constituents

#### Major

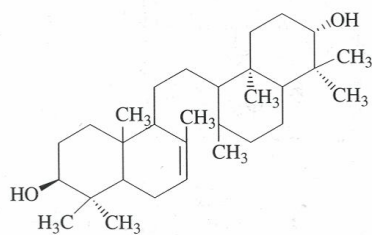
$\delta$ -Amyrin,  $\delta$ -amyrone, unsymmetric tetracyclic triterpenoids: onocer-7-ene-3 $\alpha$ , 21 $\beta$ -diol and onocer-7-ene-3 $\beta$ , 21 $\alpha$ -diol.



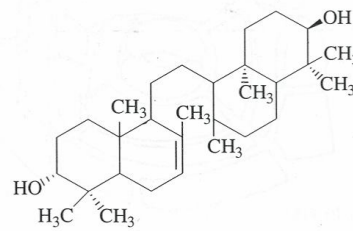
$\delta$ -Amyrone



$\delta$ -Amyrin

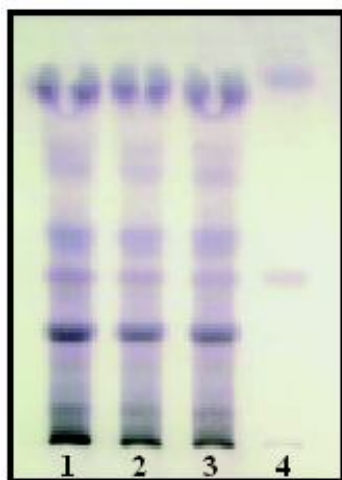


Onocer-7-ene-3 $\beta$ , 21 $\alpha$ -diol



Onocer-7-ene-3 $\alpha$ , 21 $\beta$ -diol

## TLC/ HPLC Details



TLC profile of the test solution  
of *Cissus quadrangularis* stem.  
**1-3** : Test solution; **4** : *d*-Amyrin standard.