

## 8 *Cardiospermum halicacabum* Linn. (Kakadani)

The drug consists of dried whole plant of *Cardiospermum halicacabum* Linn. (A & B) ; Fam. Sapindaceae. A small annual straggling herbaceous climber with perennial rootstock, found throughout the drier parts of Indian plains.



A. A fruiting branch

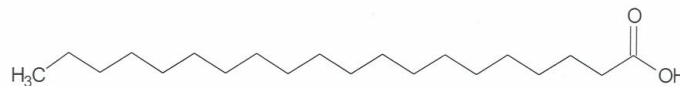
B. Dried aerial plant

*Cardiospermum halicacabum* Linn.

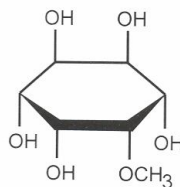
### Chemical Constituents

#### Major

Arachidic acid.



Arachidic acid

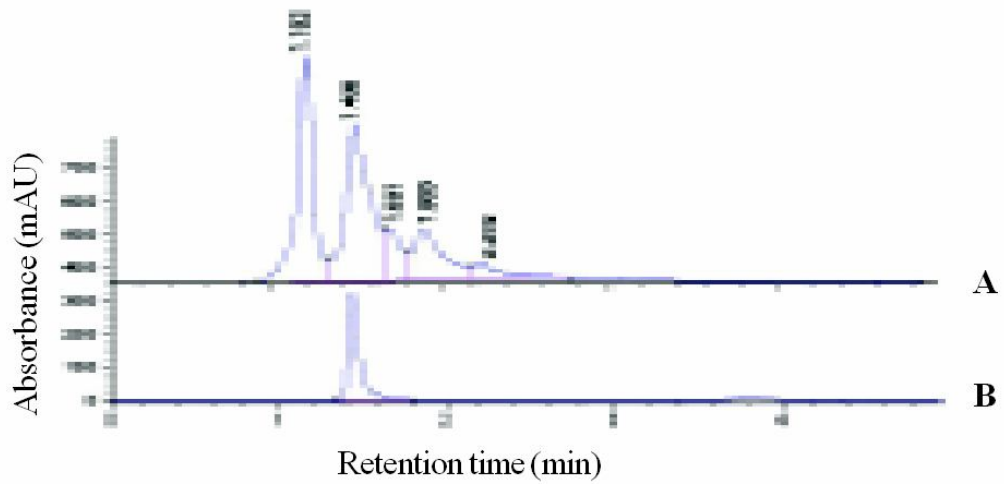


Quebrachitol

## TLC/HPLC Details



TLC profile of test solution of *Cardiospermum halicacabum* whole plant visualized in white light. **1-3**: Test solution; **4**: Arachidic acid standard.



HPLC chromatogram. **A**. Test solution of *Cardiospermum halicacabum* whole plant; **B**. Arachidic acid standard.