

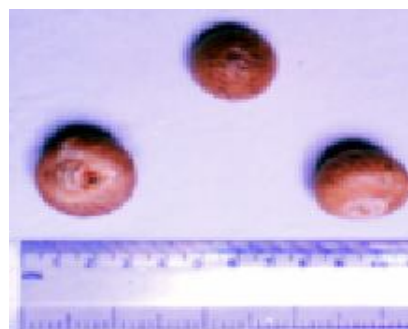
8 *Areca catechu* Linn.

(Puga)

Drug consists of dried ripe seed of *Areca catechu* Linn. (Plate 8.1 A & B); Fam. Areaceae. A slender perennial palm, trunk reaching a height of about 25 m, cultivated in coastal region of Southern India, Bengal and Assam, up to an altitude of 1000 m.



A. Aerial part



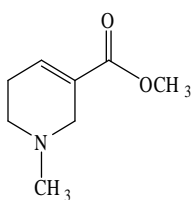
B. Seeds

Plate 8.1 *Areca catechu* Linn.

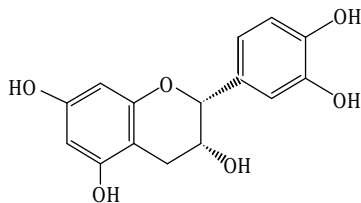
Chemical Constituents

Major

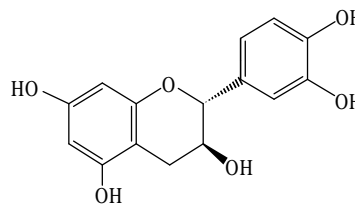
Arecoline, (+)- catechin, (-)- epicatechin.



Arecoline



(-)-Epicatechin



(+)-Catechin