

## ***7 Curcuma zedoaria* (Christm.) Rosc. (Karcura)**

Drug consists of the dried cut yellowish slices of rhizome of *Curcuma zedoaria* (Christm.) Rosc. (A, B & C); Fam. Zingiberaceae. A large perennial herb with pale yellow-rhizome, faintly aromatic inside; growing widely in Eastern Himalayas and in moist deciduous forests of the central regions of Karnataka, also cultivated throughout the country.



**B. Fresh rhizome**



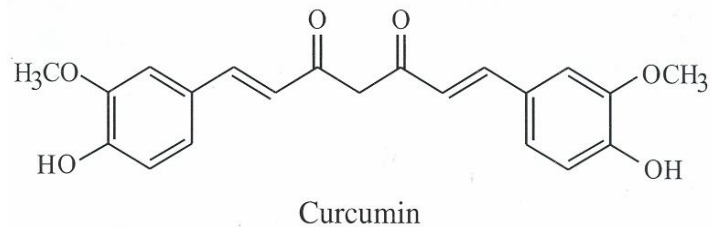
**C. Dried rhizome pieces**

*Curcuma zedoaria* (Christm.) Rosc.

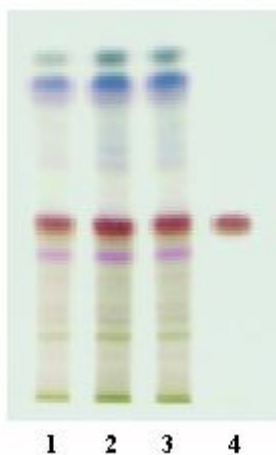
### **Chemical Constituents**

#### ***Major***

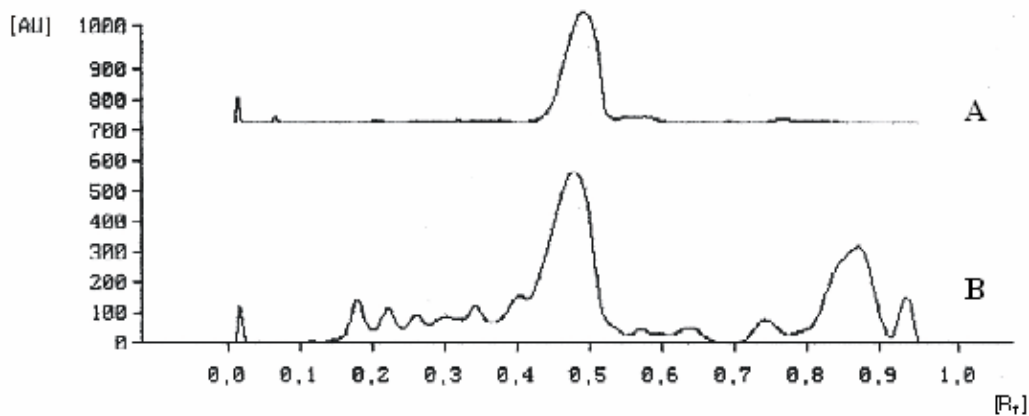
Zederone, furanodiene, curcumenol, zedoarondiol, curcumenone.



**TLC/HPTLC Details**



TLC profile of test solution of ethanol extract of *Curcuma zedoaria* rhizome **1-3**: Test solution; **4**: Curcumin standard.



HPTLC densitometric scan at 254 nm. **A**. Curcumin standard; **B**. Test solution of ethanol extract of *Curcuma zedoaria* rhizome.