

7 *Catharanthus roseus* (Linn.) G.Don (Sadapuwpi)

Drug consists of dried leaf of *Catharanthus roseus* (Linn.) G.Don (A & B) (syn. *Vinca rosea* Linn.; *Lochnera rosea* (Linn.) Reichb.)¹; Fam. Apocynaceae. It is an erect, everblooming glabrous, 30 to 60 cm high and grown as an ornamental herb. The plant has spread all over the tropical and subtropical parts of India, and grows wild all over the plains and lower foothills in northern and southern hills of India.



A. Flowering branch



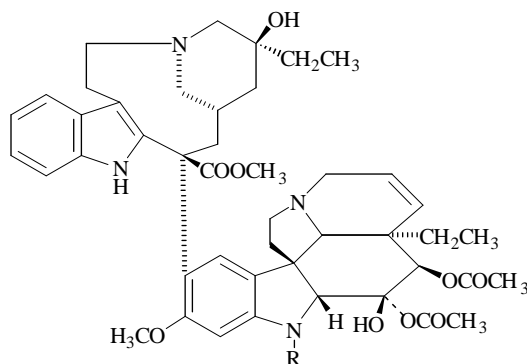
B. Dried leaves

Catharanthus roseus (Linn.) G.Don

Chemical Constituents

Major

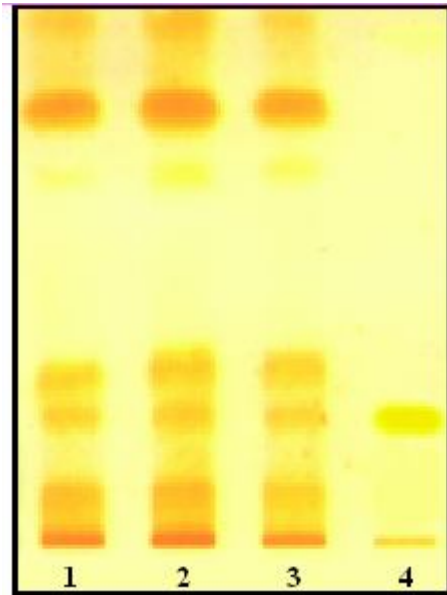
Total alkaloids 0.74 to 0.82 per cent. Important ones are, vincristine, vinblastine, catharanthamine, vincoline.



Vincristine R = CHO

Vinblastine R = CH₃

TLC/ HPLC Details



TLC profile of test solution of *Catharanthus roseus* leaf extract.
1-3 : Test solution; **4** : Vinblastine standard.