

## 7 *Blumea lacera* (Burm.f.) DC. (Kukundara)

Drug consists of dried whole plant of *Blumea lacera* (Burm.f.) DC. (syn. *B. subcapitata* DC.) (A & B); Fam. Asteraceae. An erect, annual herb with strong pungent odour, distributed throughout the plains of India, ascending up to 650 m.



A. Plant



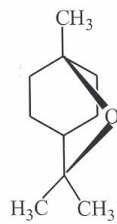
B. Dried plant

*Blumea lacera* (Burm.f.) DC.

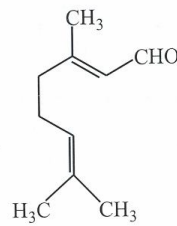
### Chemical Constituents

#### Major

Cineol, citral.



Cineol

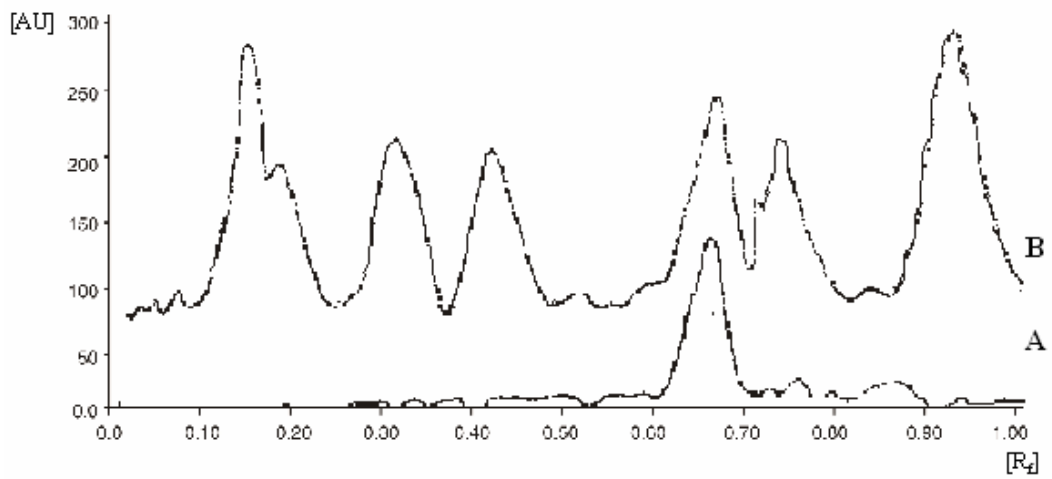


Citral

## TLC/HPTLC Details



TLC profile of test solution of *Blumea lacera* whole plant. **1** : Cineol standard; **2-4** : Test solution.



HPTLC densitometric scan at 600 nm. **A**. Cineol standard; **B**. Test solution of *Blumea lacera* whole plant.