

**7 *Anogeissus latifolia* (Roxb. ex DC.)
Wall. ex Guill. & Perr.
(Dhava)**

Drug consists of dried stem bark of *Anogeissus latifolia* (Roxb. ex DC.) Wall. ex Guill. & Perr. (A, B & C); Fam. Combretaceae. A medium to large sized tree, distributed throughout India in dry deciduous forests and in the sub-Himalayan region and hills of South India, up to 1300 m.



A. Plant



B. Tree trunk



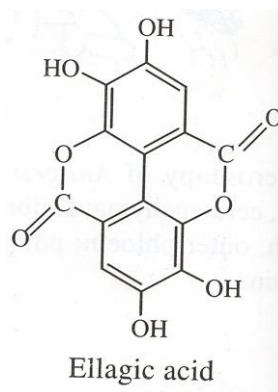
C. Stem bark
a. Outer surface b. Inner surface

Anogeissus latifolia (Roxb. ex DC.) Wall. ex Guill. & Perr.

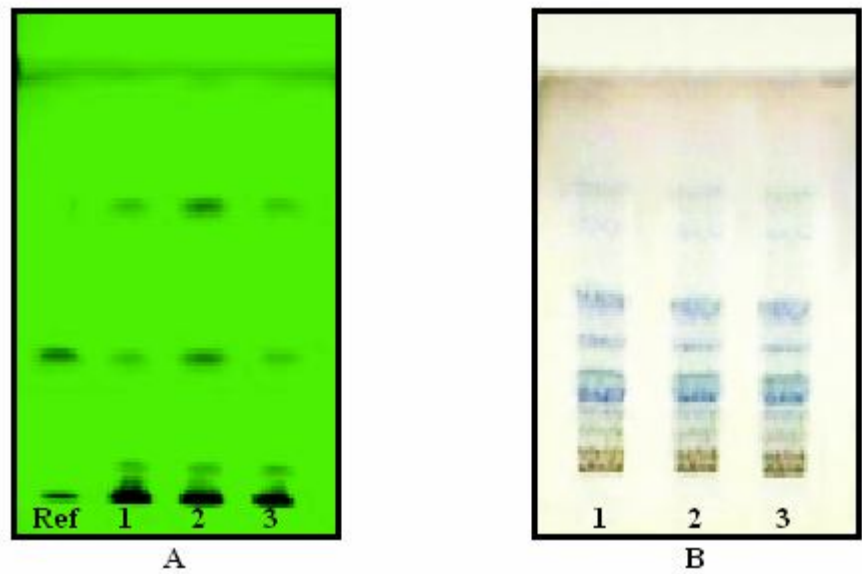
Chemical Constituents

Major

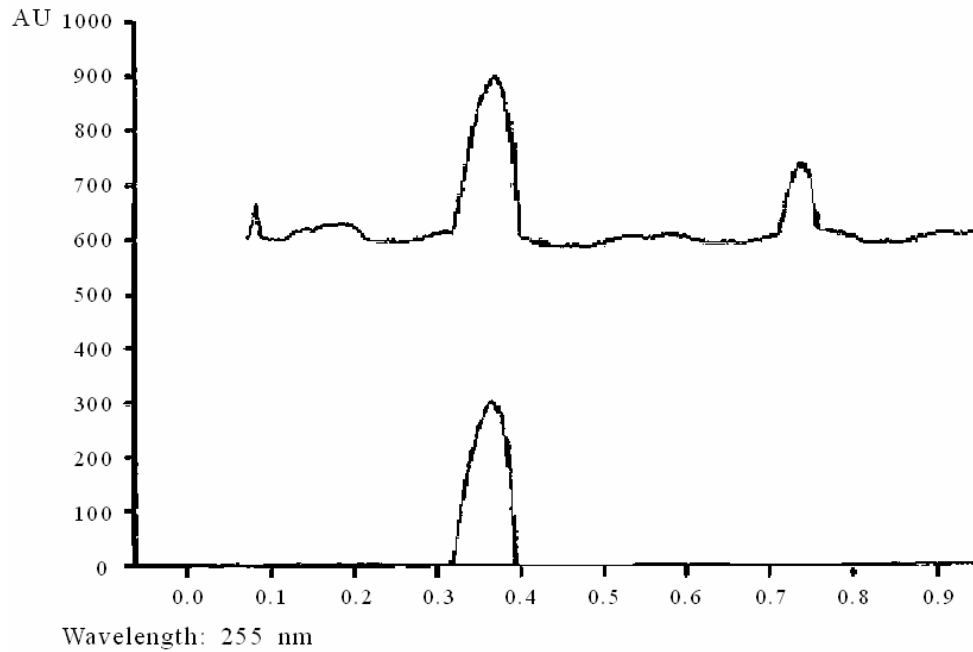
Ellagic acid 3,3',4-tri-*O*-methylellagic acid



TLC Details



TLC profile of test solution of *Anogeissus latifolia* stem bark. **A.** UV 254 nm; **B.** Derivatized. **Ref:** Ellagic acid standard; **1-3:** Test solution.



TLC densitometric scan at 255 nm. **A.** Ellagic acid standard; **B.** Test solution of *Anogeissus latifolia* stem bark.

