

6 *Crinum asiaticum* Linn.

(Kandali)

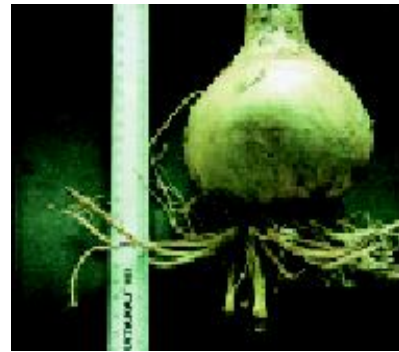
Drug consists of dried bulbous rootstock of *Crinum asiaticum* Linn., with cluster of root and aerial pseudostem (A, B, C, D & E); Fam. Amaryllidaceae. An ornamental perennial herb; growing on sandy seashores, on swampy river banks and streams and cultivated in the gardens throughout India.



A. Plant



C. Fresh bulb



D. Dried bulb



B. A flowering scape



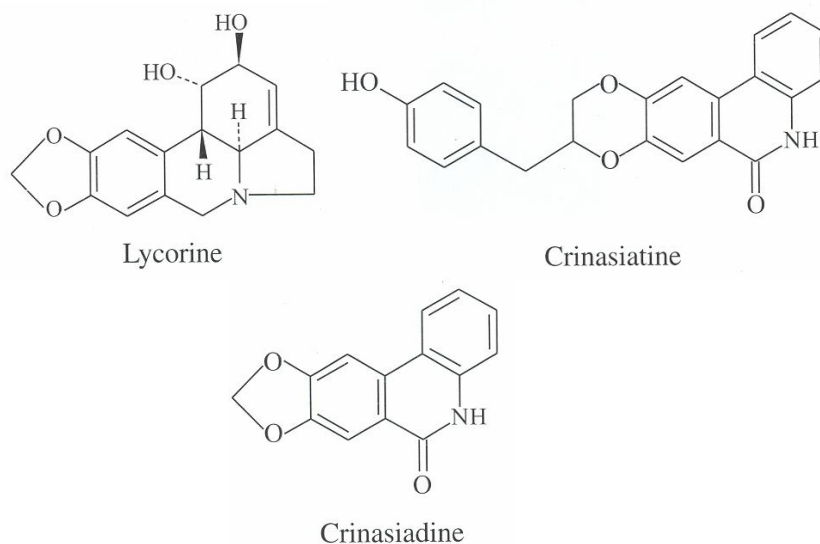
E. A fruiting scape

Crinum asiaticum Linn.

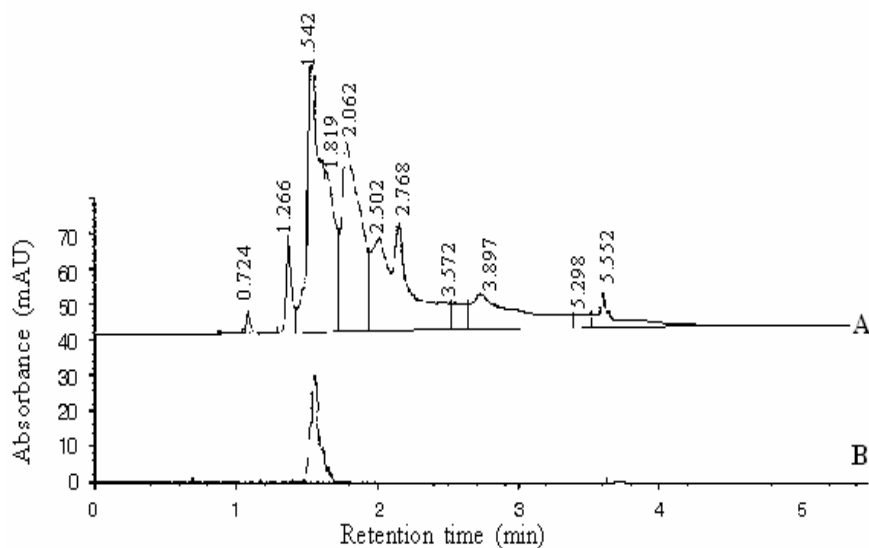
Chemical Constituents

Major

Crinasiatine, crinasiadine (8,9-methylenedioxy-6-phenanthridone), lycorine.



TLC/HPLC Details



TLC profile of test solution of ethanol extract of *Crinum asiaticum* bulb. **1-3:** Test solution; **4:** Lycorine standard.

A. Test solution of ethanol extract *Crinum asiaticum* bulb; **B.** Lycorine standard.