

6 *Cassia fistula* Linn. (Aragvadha)

Drug consists of dried pulp* of fruit of *Cassia fistula* Linn. (A & B) Fam. Caesalpiniaceae. The plant is a medium sized tree found both in cultivation mostly as avenue tree and wild, throughout India, ascending up to 900 m in the hills.



A. Flowering and fruiting branches



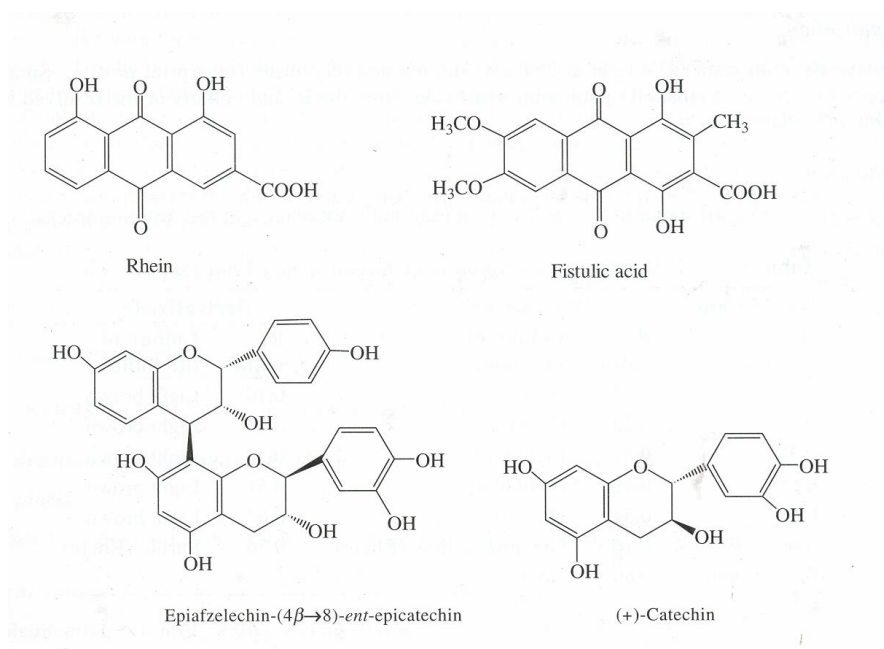
B. Fruit pulp (dry)

Cassia fistula Linn.

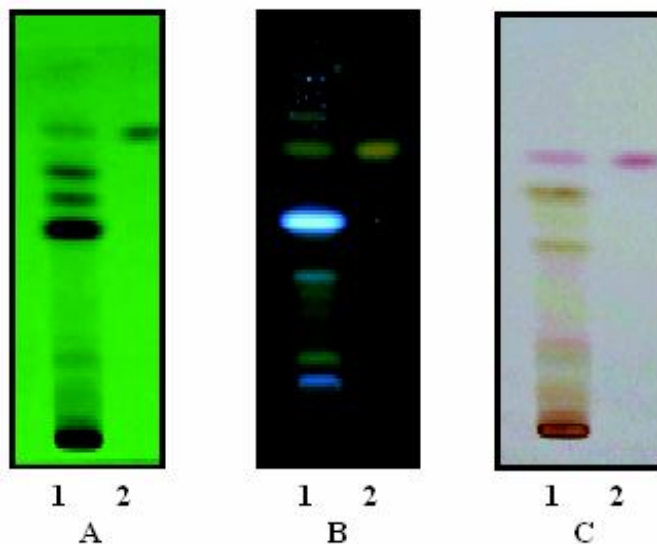
Chemical Constituents

Major

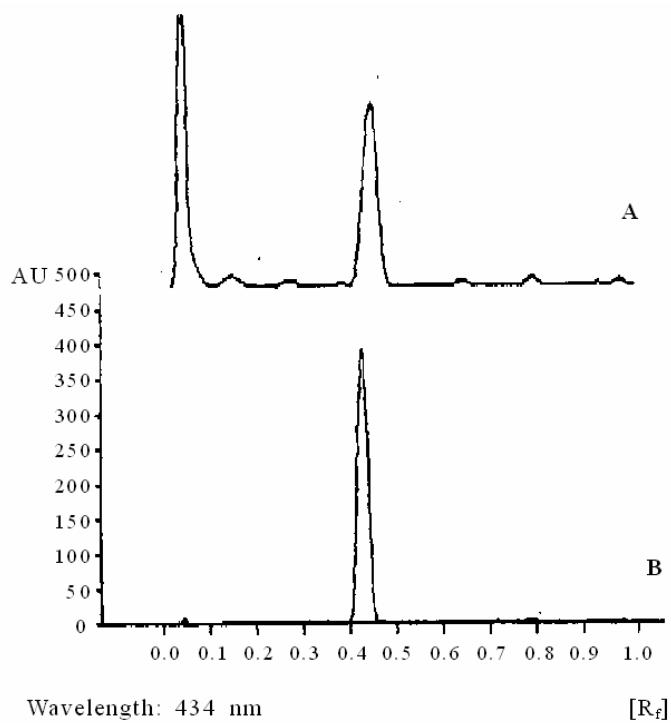
Rhein glucoside, rhein, fistulic acid, sennoside A, B; proanthocyanidins containing flavan-3-ol (epiafzelechin and epicatechin) units with 2*S*-configuration, viz., catechin, epiafzelechin, epicatechin, procyanidin B-2 and its enantiomer, epiafzelechin-(4 β →8)-epicatechin and its enantiomer, epicatechin-(4 β →8)-*ent*-epiafzelechin and its enantiomer⁴.



TLC/ HPLC Details



TLC profile of test solution of *Cassia fistula* fruit pulp.
A. UV 254 nm; B. UV 366 nm; C. Derivatized.
1 : Test solution 2 : Rhein standard.



TLC densitometric scan at 434 nm.
A. Test solution of fruit pulp of *Cassia fistula*;
B. Rhein standard.