

6 *Bixa orellana* Linn. (Sinduri)

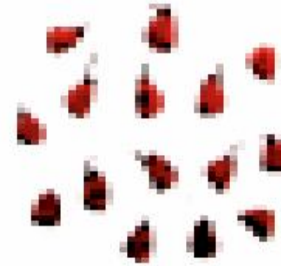
The drug consists of seed of *Bixa orellana* Linn. (A, B & C); Fam. Bixaceae. A medium sized tree growing throughout hotter parts of India, and cultivated in Orissa, Andhra Pradesh and Maharashtra as an ornamental tree.



A. A Flowering twig



B. Splitted fruit exhibiting seeds



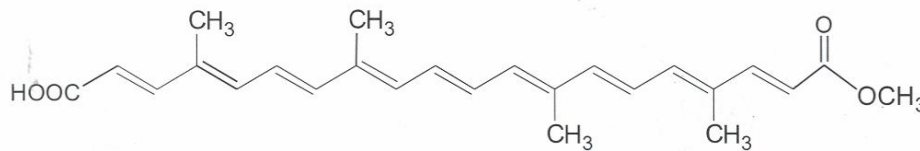
C. Seeds

Bixa orellana Linn.

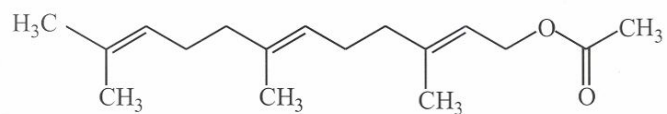
Chemical Constituents

Major

Bixin, (*Z,E*)-farnesyl acetate; occidentalol acetate; spathulenol, ishwarane; *all-(E)* - geranyl geraniol.



Bixin

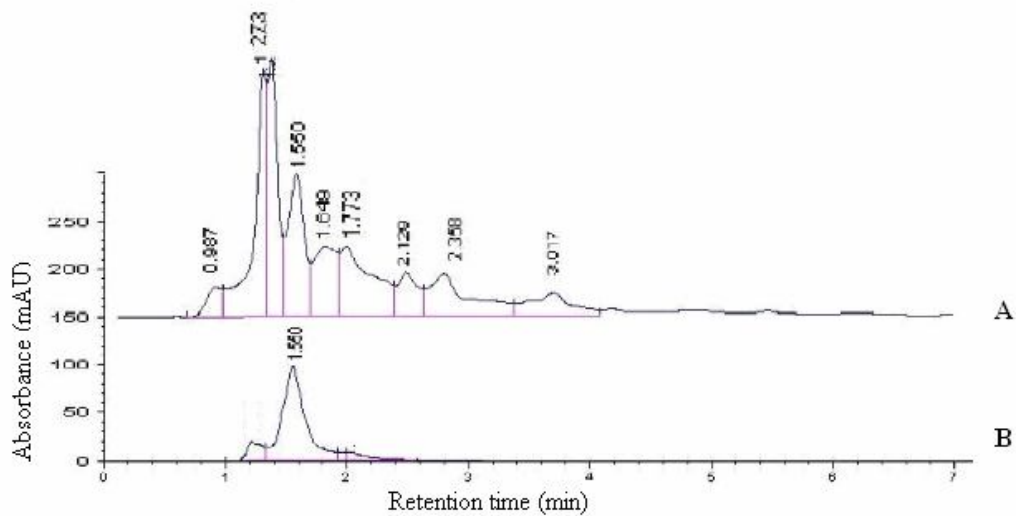


Farnesyl acetate

TLC/HPLC Details



TLC profile of test solution of *Bixa orellana* seed. **1-3** : Test solution; **4** : Bixin standard.



HPLC chromatogram. **A**. Test solution of *Bixa orellana* seed. **B**. Bixin standard.