

6 *Alstonia scholaris* (Linn.) R.Br. (Saptapar6a)

Drug consists of dried stem bark of *Alstonia scholaris* (Linn.) R.Br. (A, B & C); Fam. Apocynaceae. The plant is a moderate-sized evergreen tree, found both in evergreen and deciduous forests of India. It is also planted as an avenue tree.



A. Plant



B. Flowering twig



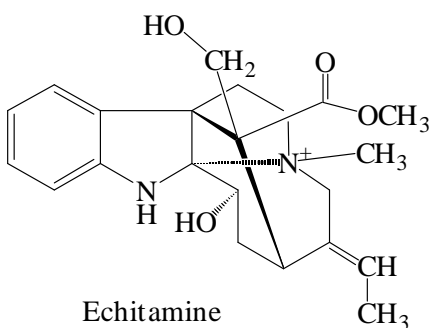
C. Stem bark
a. Outer surface b. Inner surface

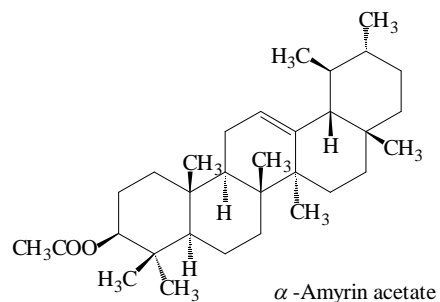
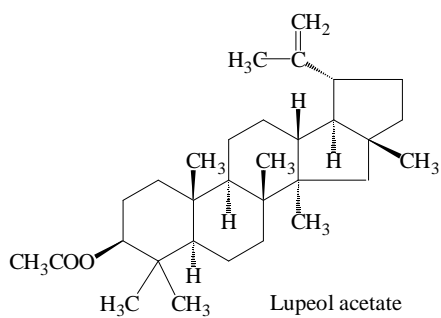
Alstonia scholaris (Linn.) R.Br.

Chemical Constituents

Major

Echitamine, α -myrin acetate and lupeol acetate.





TLC Details

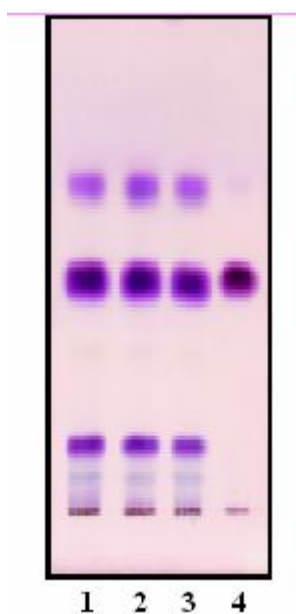


Plate 6.5 TLC profile of test solution I of *Alstonia scholaris* stem bark after derivatization with anisaldehyde-sulphuric acid reagent. **1-3:** Test solution I; **4:** α -Amyrin acetate standard.



TLC profile of test solution II of *Alstonia scholaris* stem bark derivatized with anisaldehyde-sulphuric acid reagent. **1-3:** Test solution II; **4:** Echitamine standard.