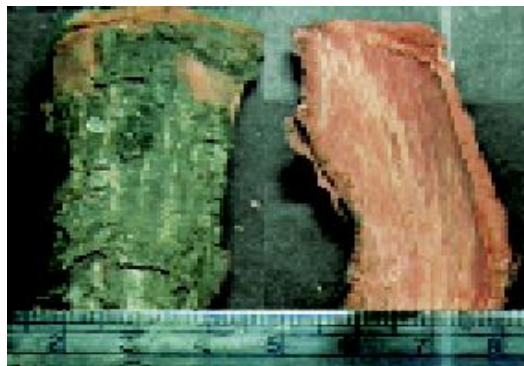


## 5 *Aphanamixis polystachya* (Wall.) Parker

The drug consists of dried stem bark of *Aphanamixis polystachya* (Wall.) Parker (syn. *Amoora rohituka* (Roxb.) Wight & Arn. (A & B); Fam. Meliaceae. A large evergreen tree, found up to 1200 m altitude, in the hilly regions almost throughout India, except the North and Northwestern parts.



A. Flowering twigs



B. Dried bark

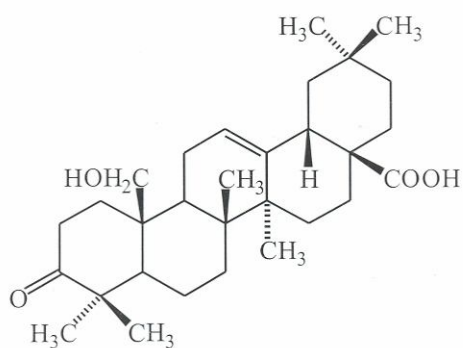
a. Outer surface b. Inner surface

*Aphanamixis polystachya* (Wall.) Parker

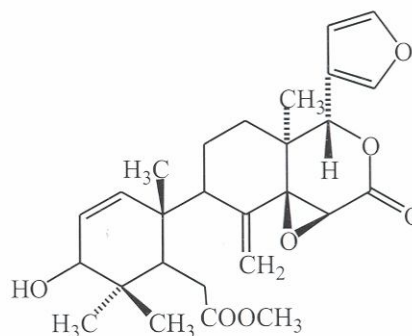
### Chemical Constituents

#### Major

Amooranin.

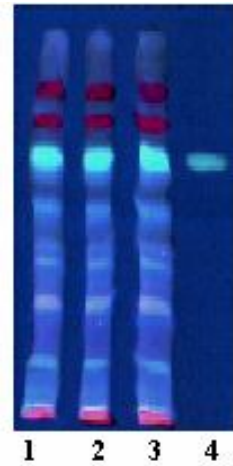


Amooranin

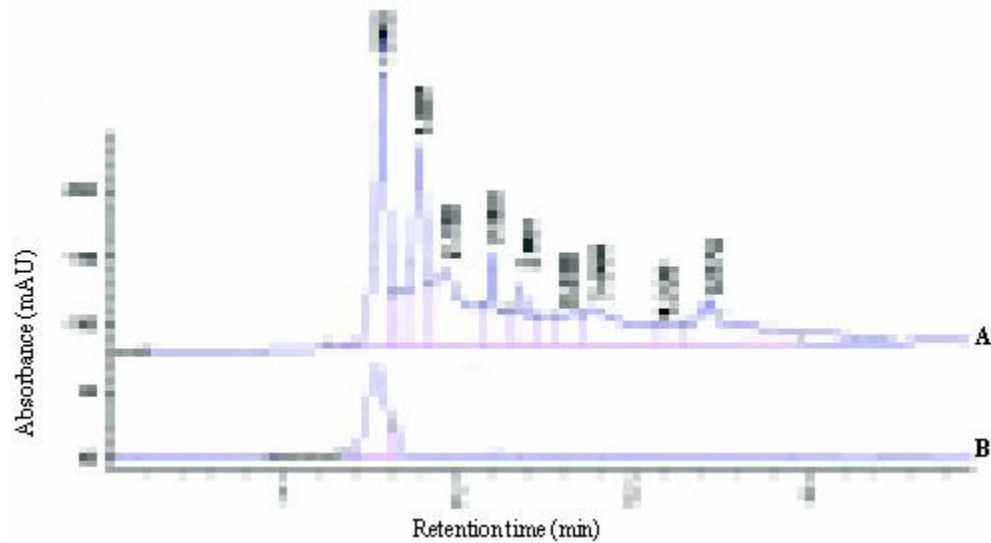


Amoorinin

## TLC/HPTLC Details



TLC profile of test solution of *Aphanamixis polystachya* stem bark. **1-3:** Test solution; **4:** Amooranin standard.



HPLC chromatogram. **A.** Test solution of *Aphanamixis polystachya* stem bark. **B.** Amooranin standard.