

## 5 *Allium sativum* Linn. (Lasuna)

Drug consists of dried bulb of *Allium sativum* Linn. (A & B); Fam. Liliaceae. The plant is a bulbous perennial herb, cultivated throughout India up to an altitude of 2000 m in the hills.



A. Bulbs



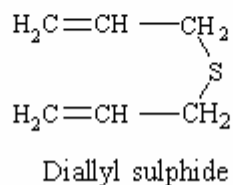
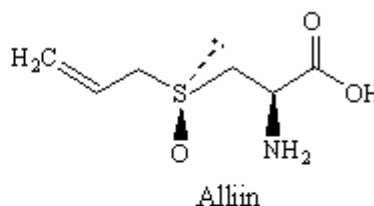
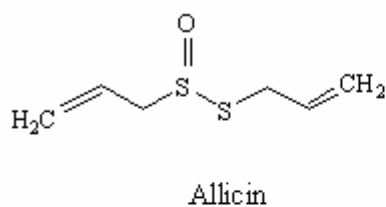
B. Dried bulblets devoid of scales

*Allium sativum* Linn.

### Chemical Constituents

#### Major

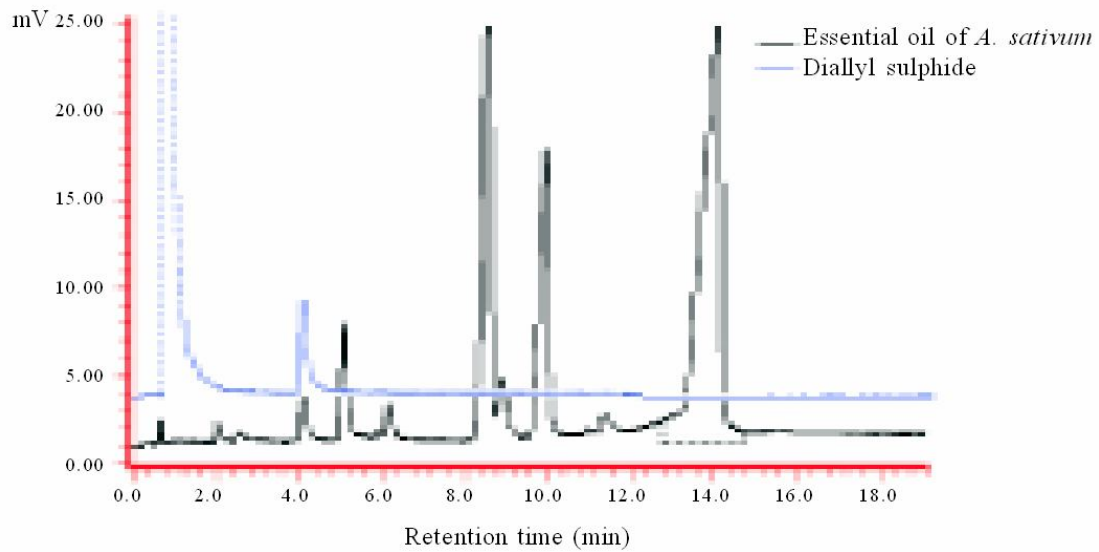
Allyl alcohol, sulphur compounds such as allicin (diallyl thiosulphinate), alliin ((+)-S-allyl-L-cysteine sulphoxide), diallyl sulphide, diallyl disulphide and allyl propyl sulphide are the major constituents from the essential oil [0.45-0.80 % (v/w)] of the bulb. Garlic is reported to be rich in vitamins<sup>1</sup> like nicotinic acid, ascorbic acid, vitamin A, thiamine, riboflavin, niacin, biotin, folic acid, etc.



## TLC/GLC Details



TLC profile of test solution  
of *Allium sativum* bulb.  
1-3: Test solution; 4: Alanine standard.



GLC fingerprint profile of the essential oil from the bulb  
of *Allium sativum* along with diallyl sulphide as reference.

