

5 *Costus speciosus* (Koen. ex Retz.) J. E. Smith (Kebuka)

Drug consists of dried rhizome of *Costus speciosus* (Koen. ex Retz.) J. E. Smith (A, B & C); Fam. Costaceae (Zingiberaceae). It is a succulent perennial herb with tuberous, horizontal rhizomes growing up to 1-3 m height with spirally arranged leaves. It is found throughout the country in moist tropical evergreen forests, up to an altitude of 1200 m. It is common along roadsides, streams and in wastelands.



A. Flowering plant



B. Fresh rhizomes



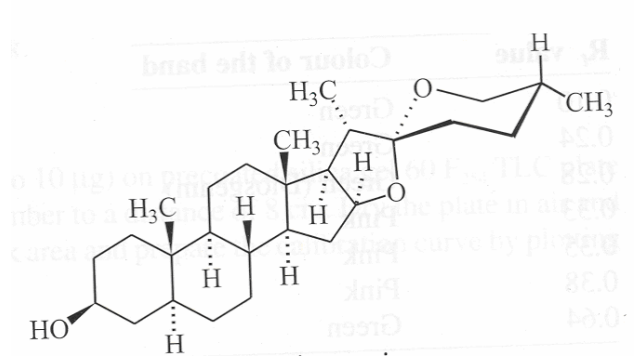
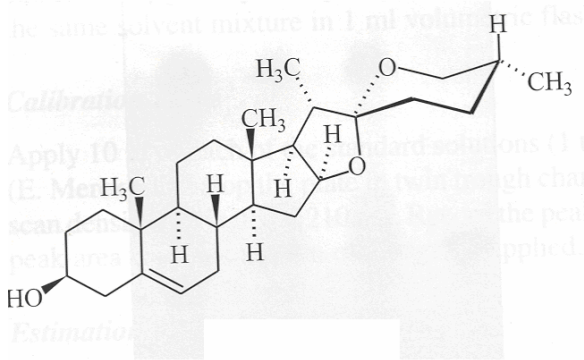
C. Dried pieces of rhizome

Costus speciosus (Koen. ex Retz.) J. E. Smith

Chemical Constituents

Major

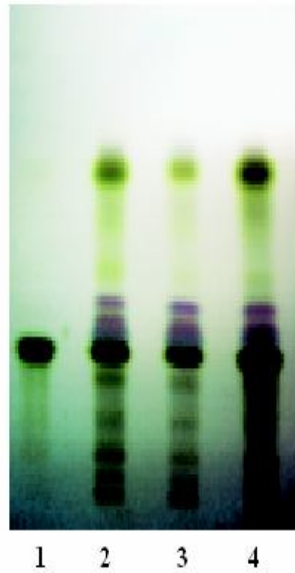
Diosgenin



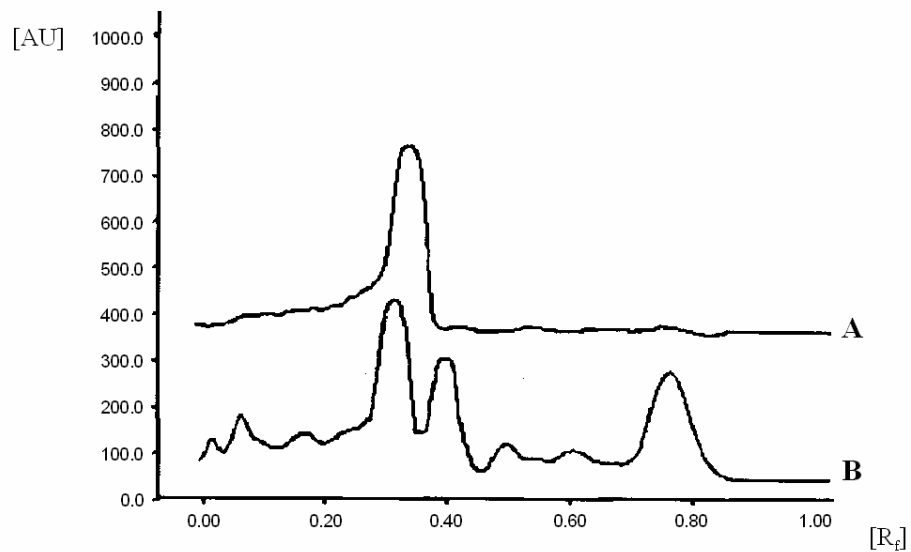
Diosgenin

Tigogenin

TLC/HPTLC Details



TLC profile of test solution of processed extract of *Costus speciosus* rhizome. **1:** Diosgenin standard; **2-4:** Test solution.



HPTLC densitometric scan at 210 nm. **A.** Diosgenin standard; **B.** Test solution of processed extract of *Costus speciosus* rhizome.