

4 *Caesalpinia sappan* Linn. (Pattanga)

Drug consists of dried heartwood of *Caesalpinia sappan* Linn. (A, B & C); Fam. Caesalpiniaceae. A small, fast growing tree with rufous-pubescent prickly stem, about 6 to 9 m in height; growing wild in West Bengal, Orissa, Madhya Pradesh, Bihar and South India.



A. Flowering twig



B. Young prickly stem



C. Dried pieces of heartwood

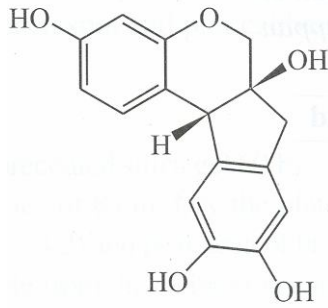
Caesalpinia sappan Linn.

Chemical Constituents

Major

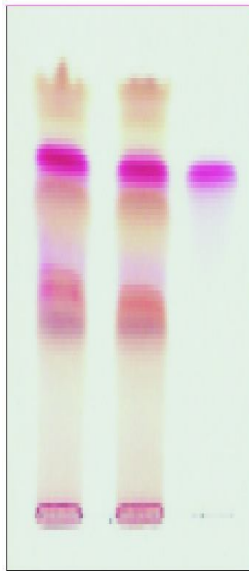
Brazilin.

Caesalpinia sappan Linn.

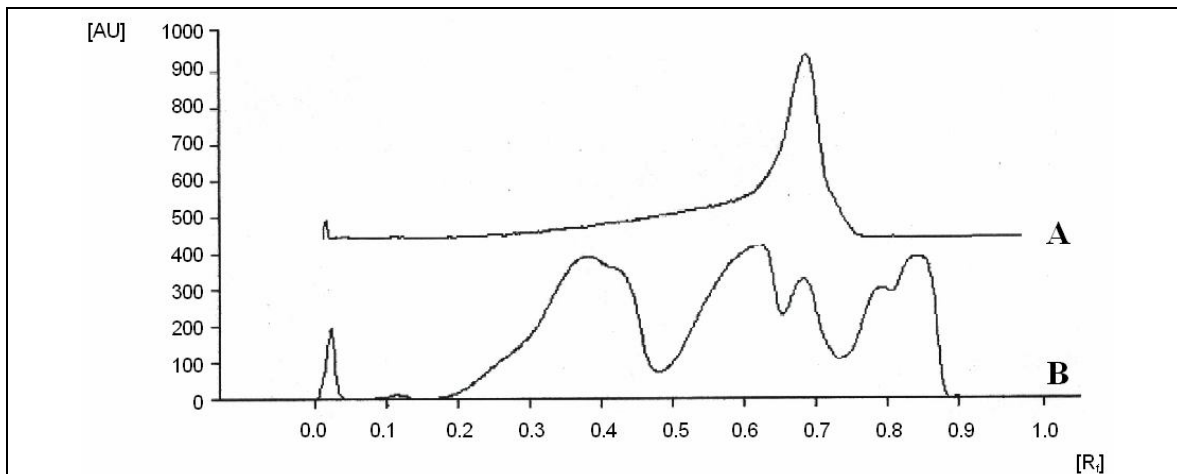


Brazilin

TLC/HPTLC Details



TLC profile of test solution of ethanol extract of *Caesalpinia sappan* heartwood. **1-2:** Test solution; **3:** Brazilin standard.



HPTLC densitometric scan at 254 nm. **A.** Brazilin standard; **B.** Test solution of ethanol extract of *Caesalpinia sappan* heartwood.