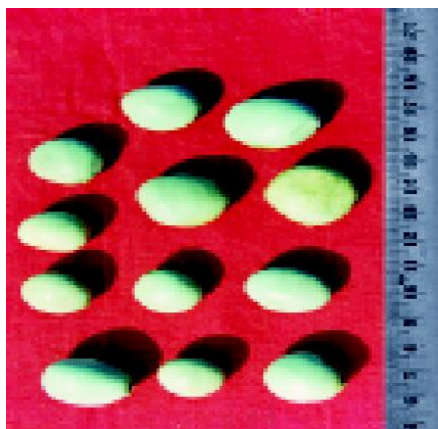


## 4 *Caesalpinia bonduc* (Linn.) Roxb. emend. Dandy & Exell (Latakarañja)

Drug consists of seed of *Caesalpinia bonduc* (Linn.) Roxb. emend. Dandy & Exell (A & B) (syn. *C. bonducella* (Linn.) Flem.; *C. crista* Linn.)<sup>1</sup>; Fam. Caesalpiniaceae. It is an extensive shrubby, perennial climber distributed throughout India in plains on wasteland and coastal areas and up to 1,000 m in the hills.



A. Aerial branch



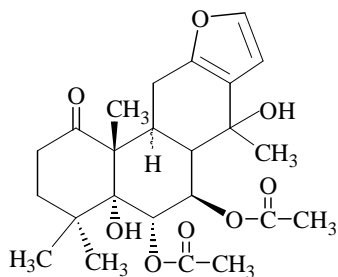
B. Seeds

*Caesalpinia bonduc* (Linn.) Roxb. emend. Dandy & Exell

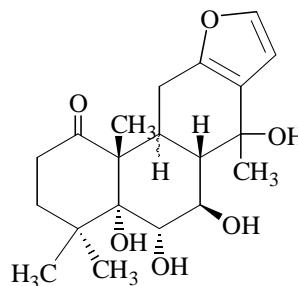
### Chemical Constituents

#### Major

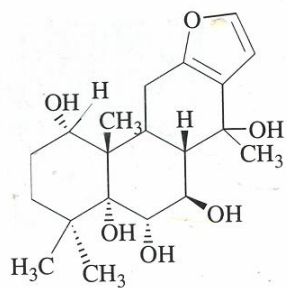
Furanoditerpenoids :  $\alpha, \beta, \gamma, \delta$  - caesalpins, pentacyclic triterpenoid : lupeol.



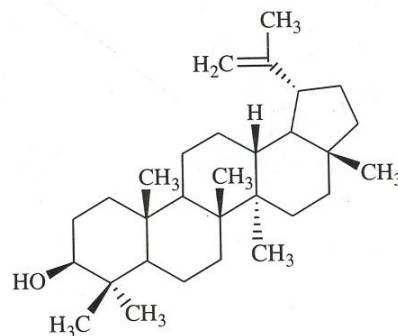
$\alpha$ -Caesalpin



$\beta$ -Caesalpin



$\delta$ -Caesalpin



Lupeol

### TLC/ HPLC Details



TLC profile of test solution of *Caesalpinia bonduc* seed extract.

**1-3:** Test solution;

**4:**  $\alpha$ -Caesalpin standard.