

## 4 *Allium cepa* Linn. (Pala6du)

Drug consists of fresh and dried bulb of *Allium cepa* Linn. (A & B); Fam. Liliaceae. The plant is extensively cultivated throughout India.



A. Dried bulbs



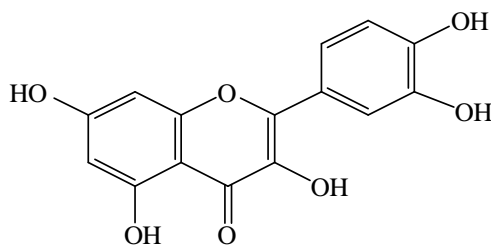
B. Whole plant

*Allium cepa* Linn.

### Chemical Constituents

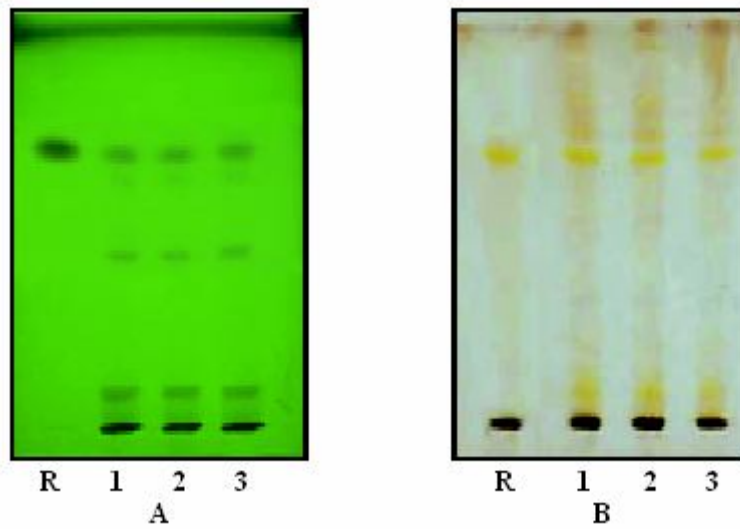
#### Major

Quercetin, kaempferol, oleanolic acid *S*-methyl-L-cysteine sulphoxide, *S*-propyl cysteine sulphoxide, *S*-propyl-L-cysteine, cycloallin.



Quercetin

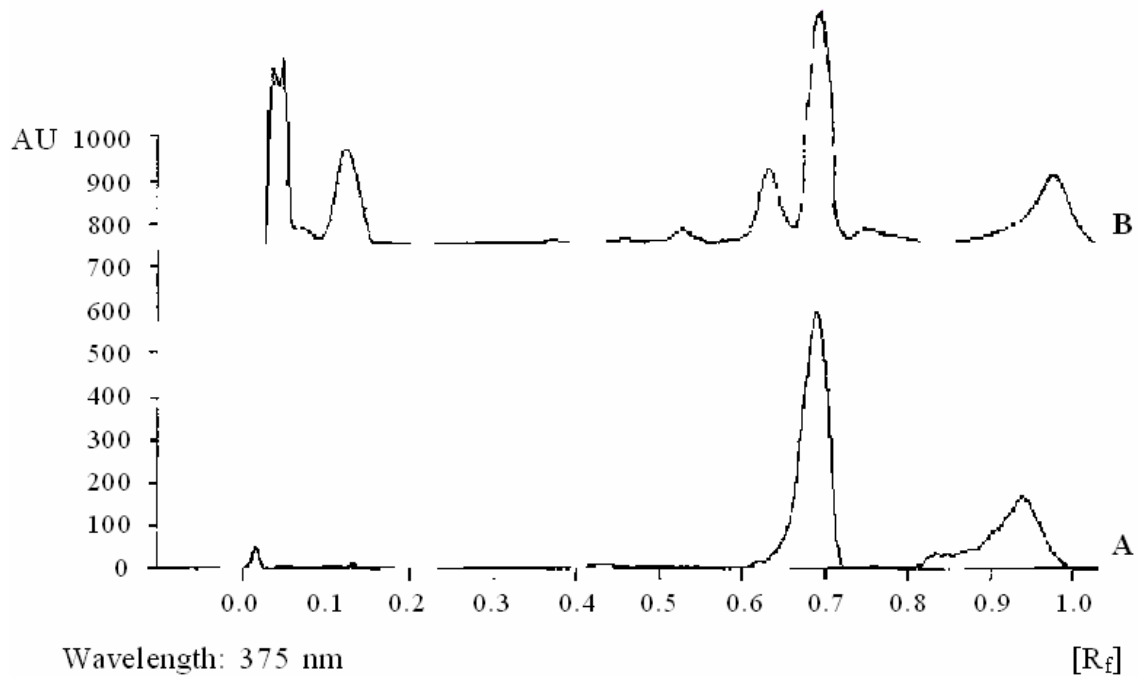
## TLC Details



TLC profile of test solution of *Allium cepa* bulb.

A. UV 254 nm; B. Derivatized.

R: Quercetin standard; 1-3: Test solution.



**Figure 4.4** TLC densitometric scan at 375 nm.  
A. Quercetin standard; B. Test solution of *Allium cepa* bulb.