

## 40 *Woodfordia fruticosa* (Linn.) Kurz (Palasa)

Drug consists of dried flower of *Woodfordia fruticosa* (Linn.) Kurz (syn. *W. floribunda* Salisb.); Fam. Lythraceae. It is a woody shrub distributed throughout India, ascending to 1500 m in hills and is also cultivated in gardens.



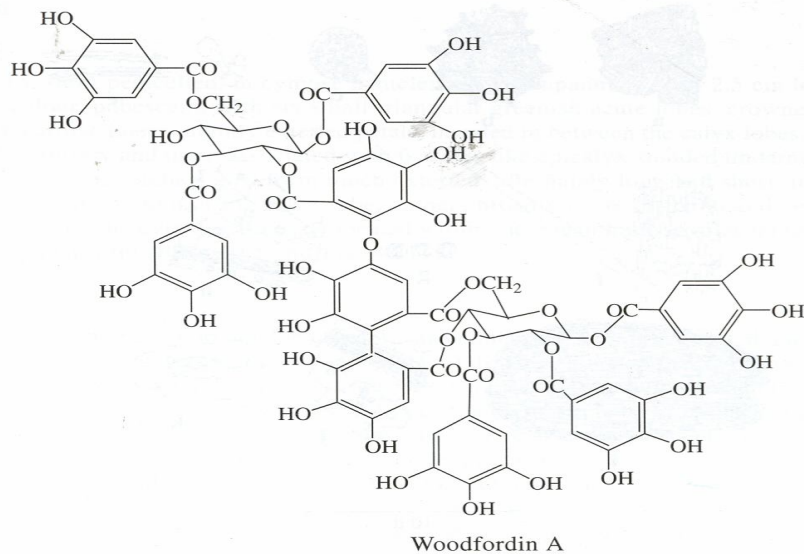
Flowering twig

*Woodfordia fruticosa* (Linn.) Kurz

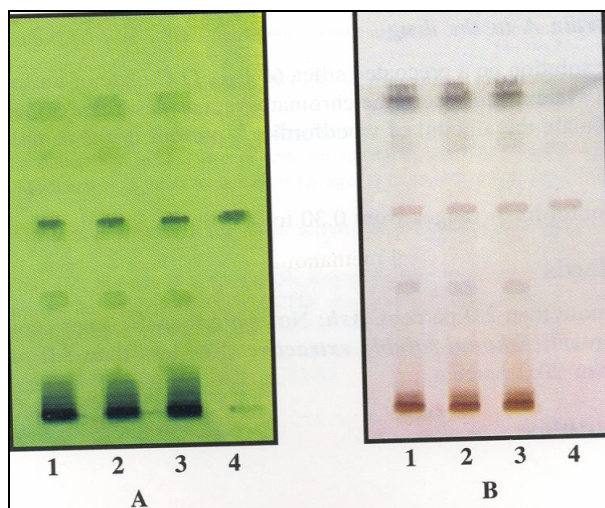
### Chemical Constituents

#### Major

Woodfordin A, B, C<sup>1,2</sup>.



## TLC Details



TLC profile of test solution of *Woodfordia fruticosa* flower. **A.** UV 254 nm; **B.** Derivatized. **1-3:** Test solution; **4:** Woodfordin A standard.