

3 *Ailanthus excelsa* Roxb. (Aralu)

The drug consists of dried stem bark of *Ailanthus excelsa* Roxb. (A & B); Fam. Simaroubaceae. The plant is a large deciduous tree, up to 25 m in height occurring in forests of northern, central and southern India including some coastal regions; also planted as avenue tree.



A. Plant



B. Stem bark

a. Inner surface

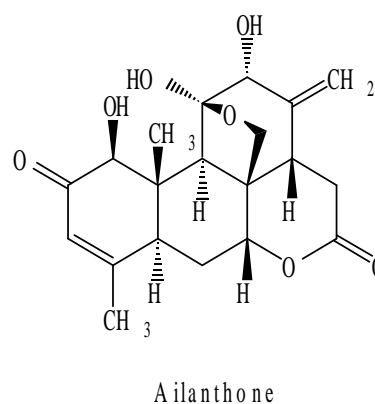
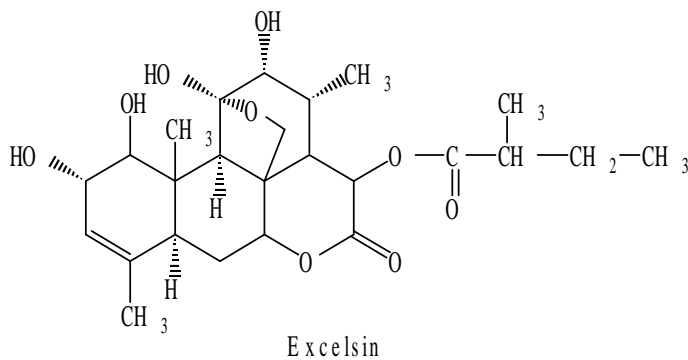
b. Outer surface

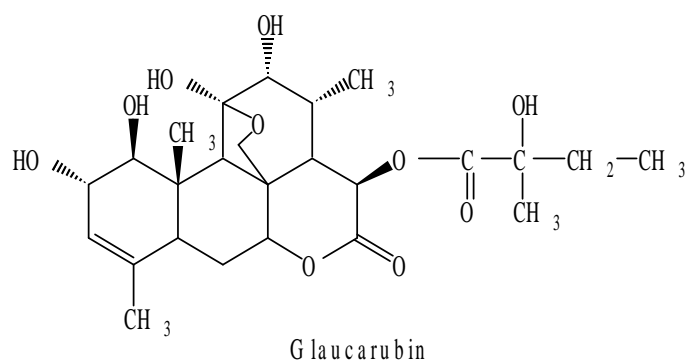
Ailanthus excelsa Roxb.

Chemical Constituents

Major

C₂₀-Quassinoid : glaucarubin, 1,12-deoxy-13-formyl ailanthinol, C₂₅-quassinoid: excelsin, 2,6-dimethoxybenzoquinone, malanthin, 1,4-dihydroexcelsin, 2,4-dihydroexcelsin, 3,4-dihydroexcelsin, ailanthinone, glaucarubinone, glaucarubolone, 13,18-dehydroexcelsin, glaucarubol.





TLC Details

