

39 *Vitex negundo* Linn. (Nirgu6di)

Drug consists of dried leaves of *Vitex negundo* Linn. (A, B, C & D); Fam. Verbenaceae. It is a large shrub 3 to 5 m high, distributed throughout the country ascending to an altitude of 1500 m in hills.



A. Aerial parts



B. Flowering twig



C. Pentafoliate leaf



D. Trifoliate leaf

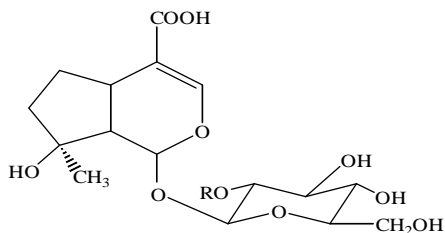
Vitex negundo Linn.

Chemical Constituents

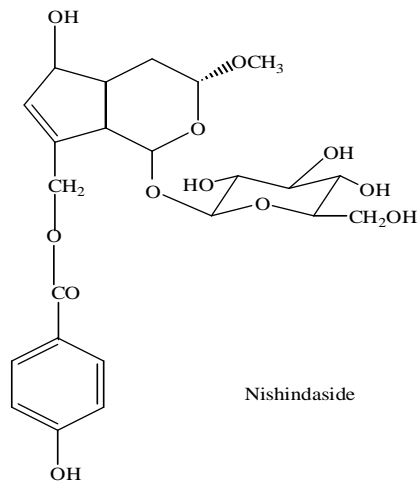
Major

Negundoside^{1,2}, nishindaside¹.

TLC Identity Test

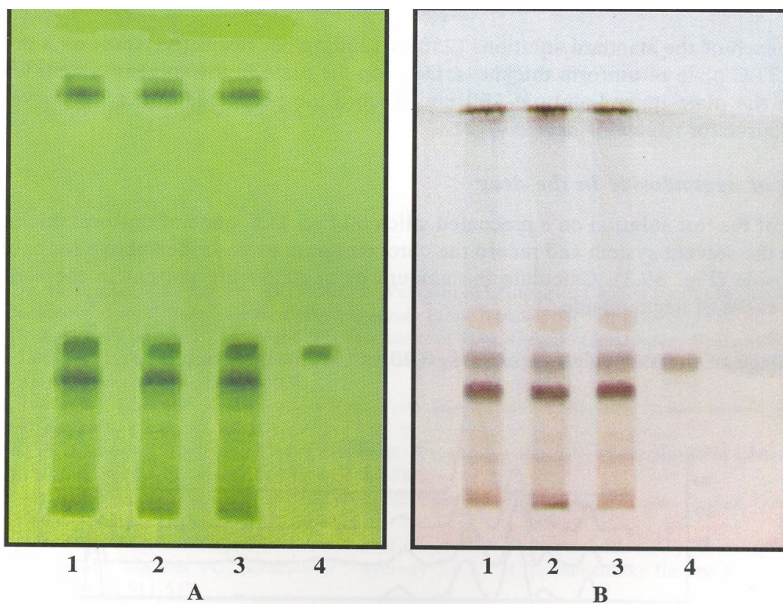


Negundoside R = COC₆H₄OH (*p*)

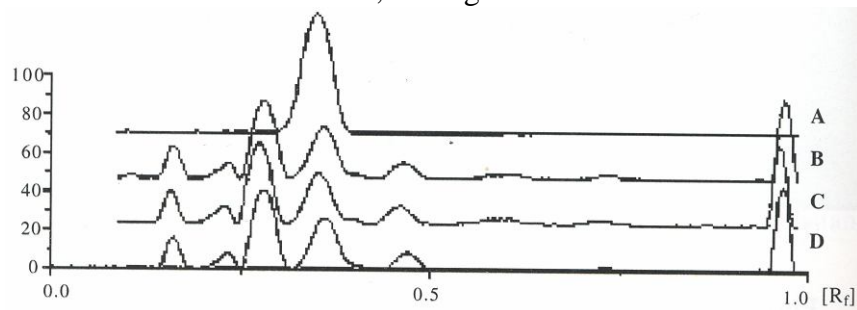


Nishindaside

TLC Details



TLC profile of test solution of *Vitex negundo* leaf. **A.** UV 254 nm; . Derivatized.
1-3: Test solution; **4:** Negundoside standard.



TLC densitometric scan at 260 nm. **A:** Negundoside standard; **B-D:** Test solution of *Vitex negundo* leaf.