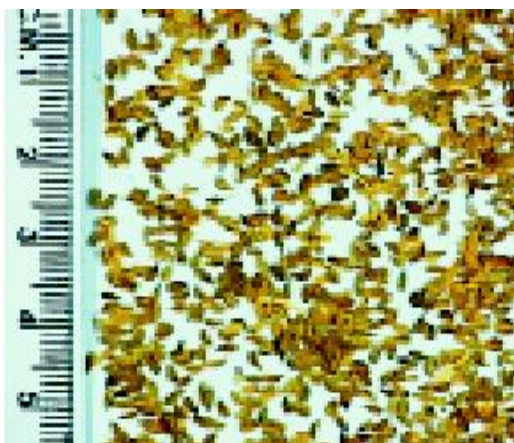


## 38 *Trachyspermum ammi* (Linn.) Sprague (Yavani)

Drug consists of dried fruit of *Trachyspermum ammi* (Linn.) Sprague (syn. *Carum copticum* (Linn.) Clarke) (A & B); Fam. Apiaceae. An annual herb, up to 90 cm tall, cultivated extensively throughout India.



A. Fruits (natural size)



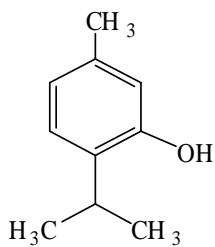
B. Fruits (enlarged)

*Trachyspermum ammi* (Linn.) Sprague

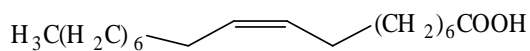
### Chemical Constituents

#### Major

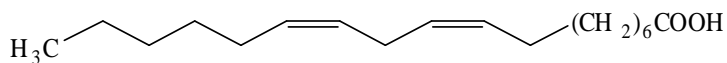
Essential oil (2.6 per cent)<sup>2</sup>, thymol<sup>3,4</sup>.



Thymol

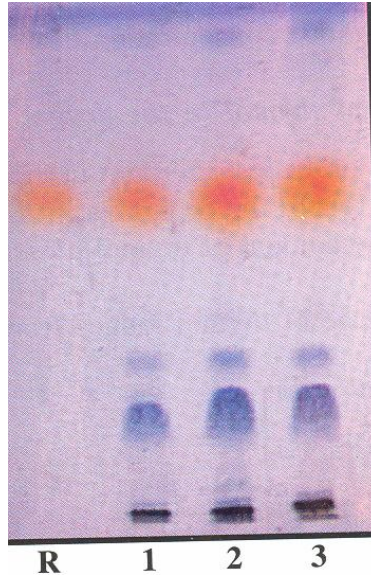


Oleic acid

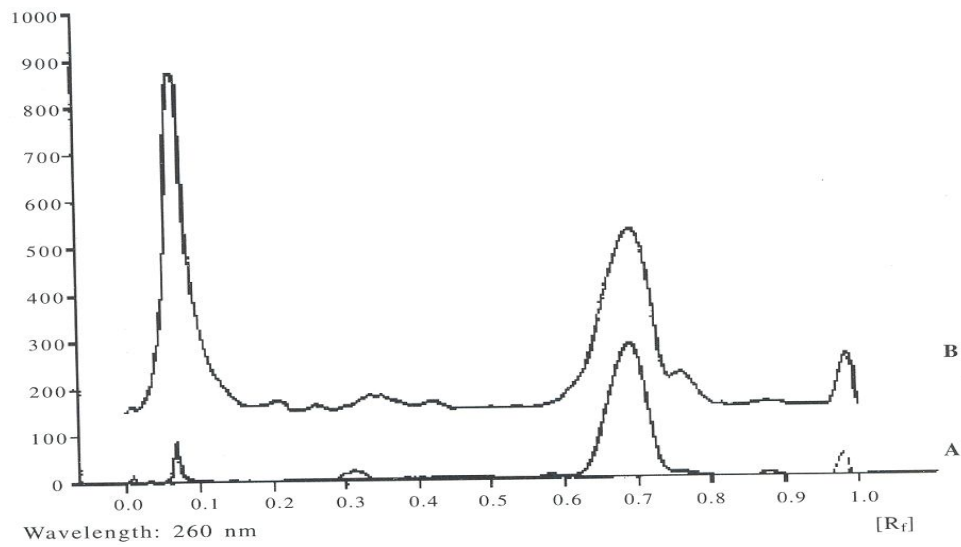


Linoleic acid

## TLC Details



TLC profile of test solution of *Trachyspermum ammi* fruit **R**: Thymol; **1-3**: Test solution.



TLC densitometric scan at 260 nm. **A**. Thymol standard; **B**. Test solution of *Trachyspermum ammi* fruit.