

37 *Tecomella undulata* (Sm.) Seem (Rohitaka)

The drug consists of dried stem bark of *Tecomella undulata* (Sm.) Seem (syn. *Tecoma undulata* G.Don) (A & B); Fam. Bignoniaceae. The plant is a deciduous, ornamental shrub or small tree, found in drier parts of the North-West and western India, extending eastwards and ascending up to an altitude of 1200 m in the lower Himalayas.



A. Tree with flowering twig



Inner surface Outer surface

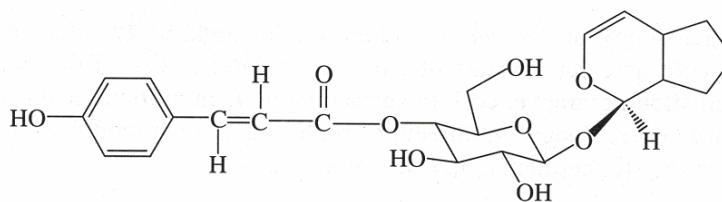
B. Dried stem bark

Tecomella undulata (Sm.) Seem

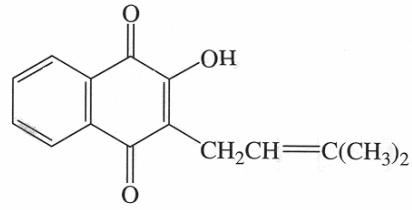
Chemical Constituents

Major

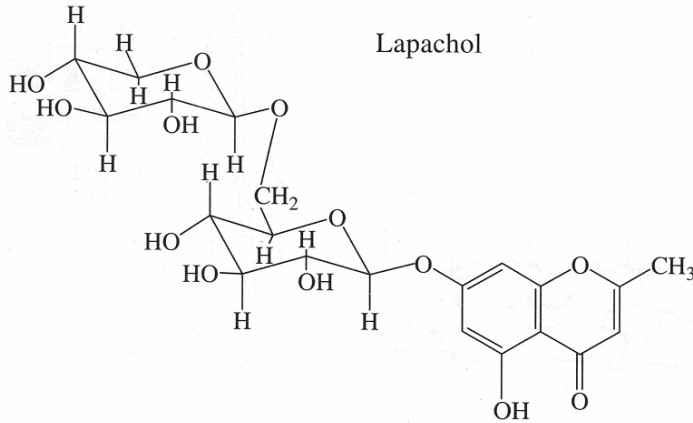
Lapachol, veratric acid, dehydrotectol¹, a chromone glucoside: undulatoside-A², 2-methyl-5,7-dihydroxychromone-7-O-β-D-glucopyranoside³, undulatoside-B², tecomin^{2,4,5}, tecomelloside², undulatin⁶.



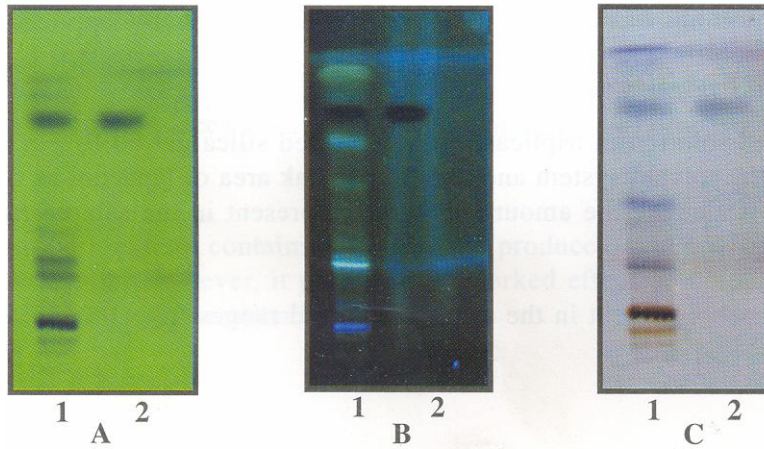
Undulatin



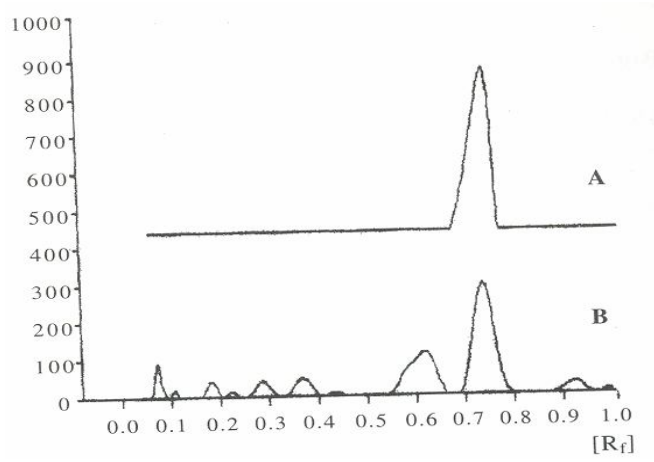
Lapachol



Undulatoside - B



TLC profile of test solution of *Tecomella undulate* stem bark. **A.** UV 254 nm; **B.** UV 366 nm; **C.** Derivatized **1:** Test solution; **2:** Lapachol standard.



TLC densitometric scan at 284 nm. **A.** Lapachol standard; **B.** Test solution of *Tecomella undulate* stem bark.