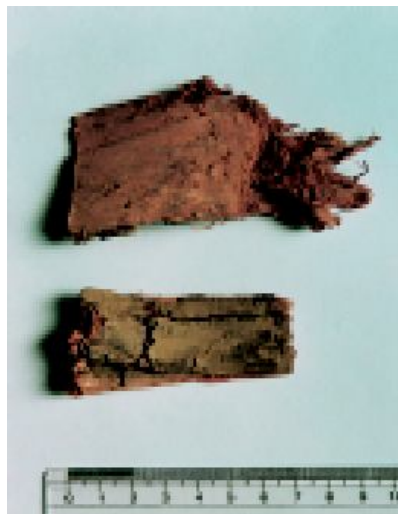


35 *Terminalia alata* Heyne ex Roth

Drug consists of dried stem bark of *Terminalia alata* Heyne ex Roth (syn. *T. tomentosa* (Roxb.) Wight & Arn.) (A & B); Fam. Combretaceae. A large tree, very common, found in the sub-Himalayan tracts, deciduous forests of India, Nepal and Sikkim, ascending to 1,300 m.



A. Flowering twig



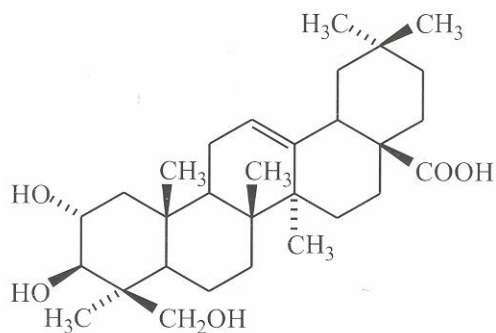
B. Dried stem bark

Terminalia alata Heyne ex Roth

Chemical Constituents

Major

Arjunolic acid, betulinic acid.

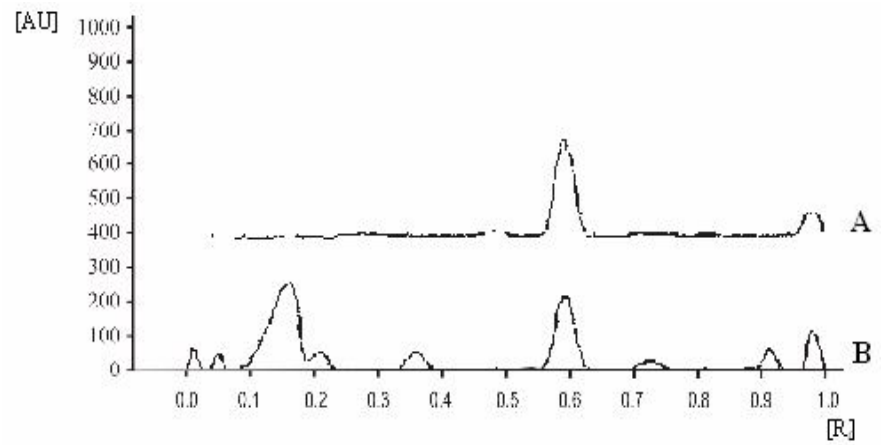


Arjunolic acid

TLC/HPTLC Details



TLC profile of ethanol extract of *Terminalia alata* stem bark. **1-3:** Test solution; **4:** Arjunolic acid standard.



HPTLC densitometric scan at 540 nm. **A.** Arjunolic acid standard; **B.** Test solution of *Terminalia alata* stem bark.