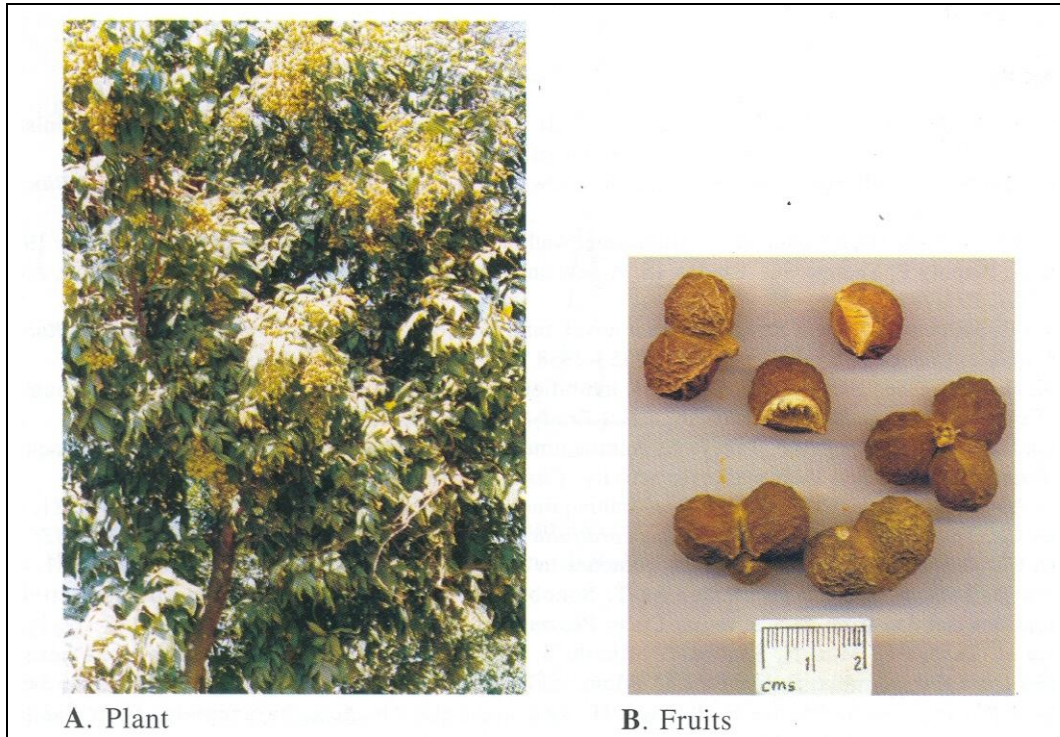


35 *Sapindus laurifolius* Vahl (Ariwtaka)

Drug consists of dried fruit of *Sapindus laurifolius* Vahl (syn. *S. trifoliatus* sensu Hook.f., p.p. (non Linn.)) (Plate 35.1 A, B); Fam. Sapindaceae. The plant is a deciduous tree, common in the peninsular India. It is also cultivated for ornamental purposes and in avenues.



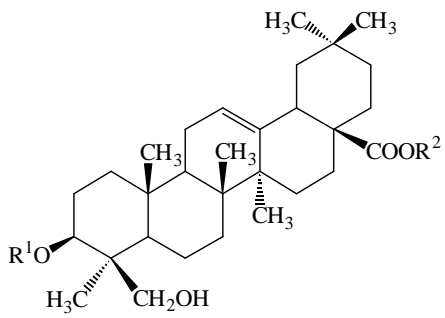
A. Plant

B. Fruits

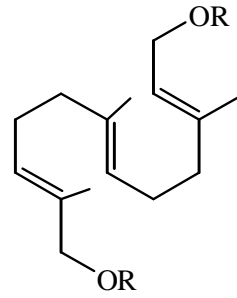
Chemical Constituents

Major

Acyclic sesquiterpene oligoglycoside : trifolioside II, saponin A, sapindoside B;
aglycones: hederagenin, oleanolic acid; sapindic acid.

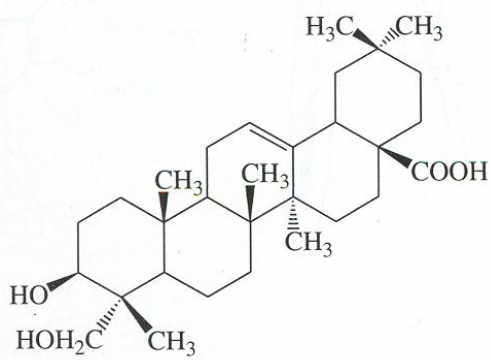


Sapindoside B $R^1 = \alpha\text{-L-Ara}(1\rightarrow2)\text{-}\alpha\text{-L-Rha}(1\rightarrow3)\text{-}\beta\text{-D-Xyl}$
 $R^2 = \text{H}$

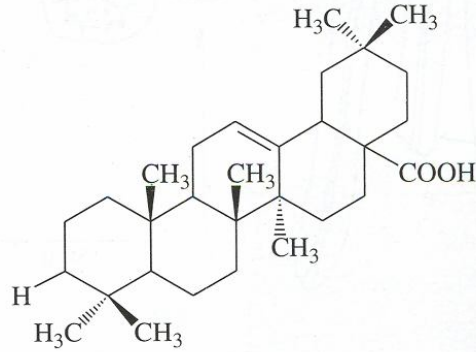


Trifolioside II

$R = \text{Glu}[(1\rightarrow2)](3\rightarrow1)\text{Xyl}$



Hederagenin



Oleanolic acid