

34 *Terminalia alata* Heyne ex Roth

Drug consists of dried leaf of *Terminalia alata* Heyne ex Roth (syn. *T. tomentosa* (Roxb.) Wight & Arn.) (A & B); Fam. Combretaceae. A large tree, very common, found in the sub-Himalayan tracts, deciduous forests of India, Nepal and Sikkim ascending to 1,300 m.



A. Flowering twig



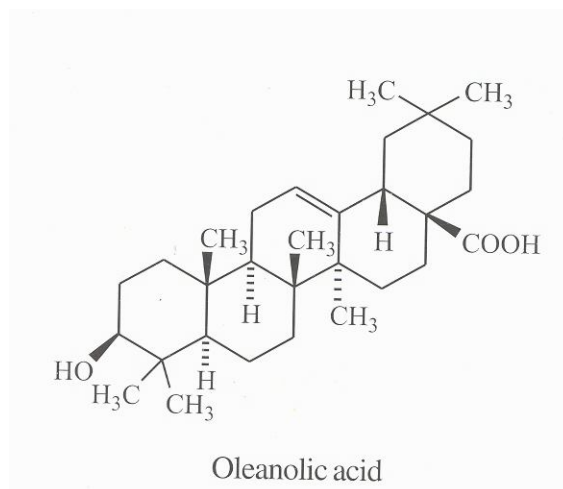
B. Dried leaves

Terminalia alata Heyne ex Roth

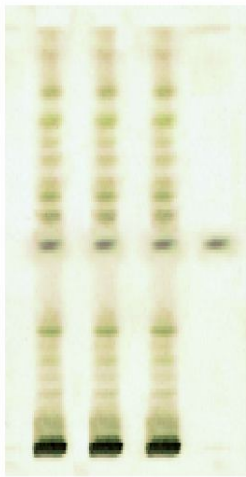
Chemical Constituents

Major

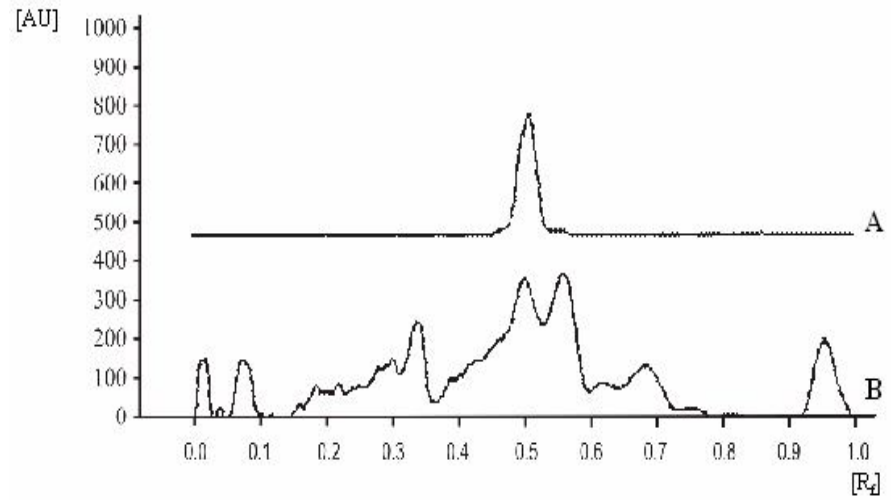
Oleanolic acid.



TLC/HPTLC Details



TLC profile of ethanol extract of *Terminalia alata* leaf. **1-3:** Test solution; **4:** Oleanolic acid standard.



HPTLC densitometric scan at 540 nm. **A.** Oleanolic acid standard; **B.** Test solution of *Terminalia alata* leaf.