

34 *Rubia cordifolia* Linn. (Mañjiwtha)

Drug consists of dried root and stem of *Rubia cordifolia* Linn. (syn. *Rubia munjista* Roxb. ex Flem.) (A, B, C & D); Fam. Rubiaceae. A perennial, herbaceous prickly climber distributed in the Himalayas from Kashmir eastwards and Nilgiris and other hilly districts of India up to an altitude of 2500 m.



A. Aerial twig



B. Fresh root



C. Dried stem



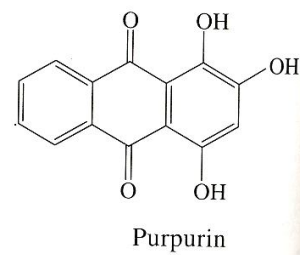
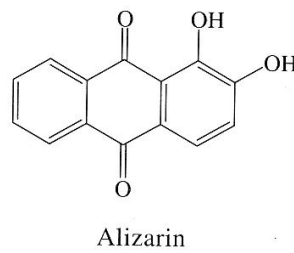
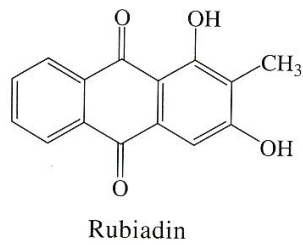
D. Dried root

Rubia cordifolia Linn.

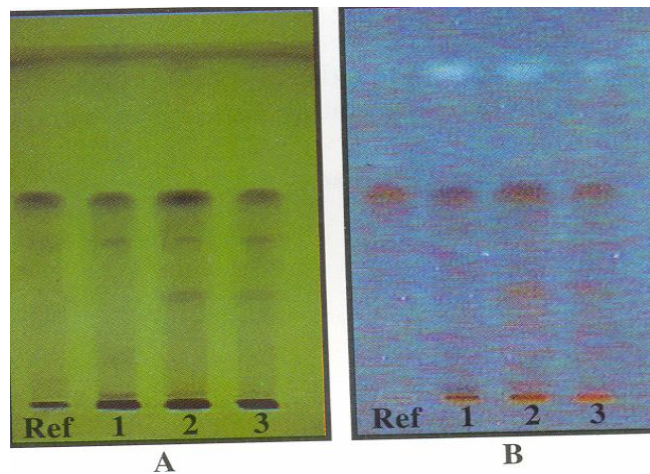
Chemical Constituents

Major

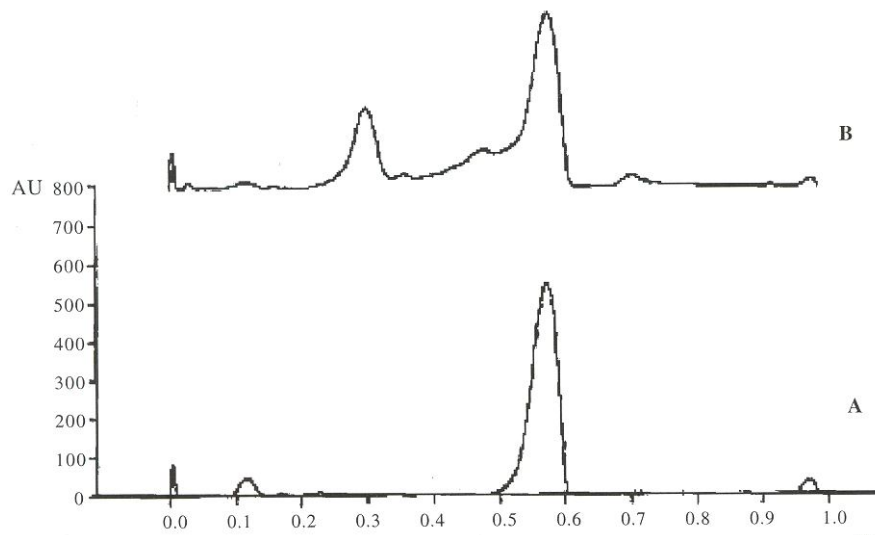
Anthraquinones : rubiadin (1,3-dihydroxy-2-methylantraquinone)^{2,5,10}, alizarin^{3,5}, purpurin³.



TLC Details



TLC profile of test solution of *Rubia cordifolia* root and stem. **A.** UV 254 nm; **B.** UV 366 nm. **Ref:** Rubiadin; **1-3:** Test solution.



TLC densitometric scan at 300 nm. **A.** Rubiadin standard; **B.** Test solution of *Rubia cordifolia* root and stem.