

## 34 *Zizyphus jujuba* Mill. (Kola)

Drug consists of dried ripe fruit (devoid of seeds) of *Zizyphus jujuba* Mill. (syn. *Z. sativa* Gaertn; *Z. vulgaris* Lamk.) (A, B & C); Fam. Rhamnaceae. An annual or biennial, hirsute deciduous, medium to large shrub, 5 to 10 m high; found in foothills of Himalayas, Deccan and Karnataka.



A. Twig with fruits



B. Dried fruits



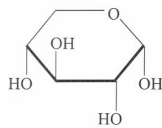
C. Dried fruit pieces (devoid of seeds)

*Zizyphus jujube* Mill

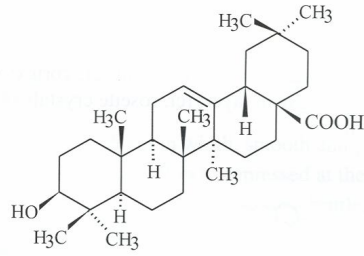
### Chemical Constituents

#### *Major*

Oleanolic acid.

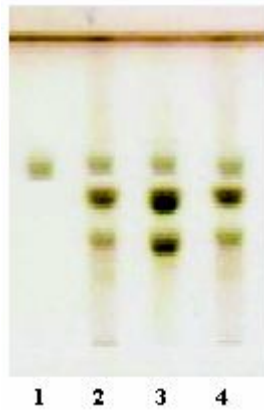


D-Xylose

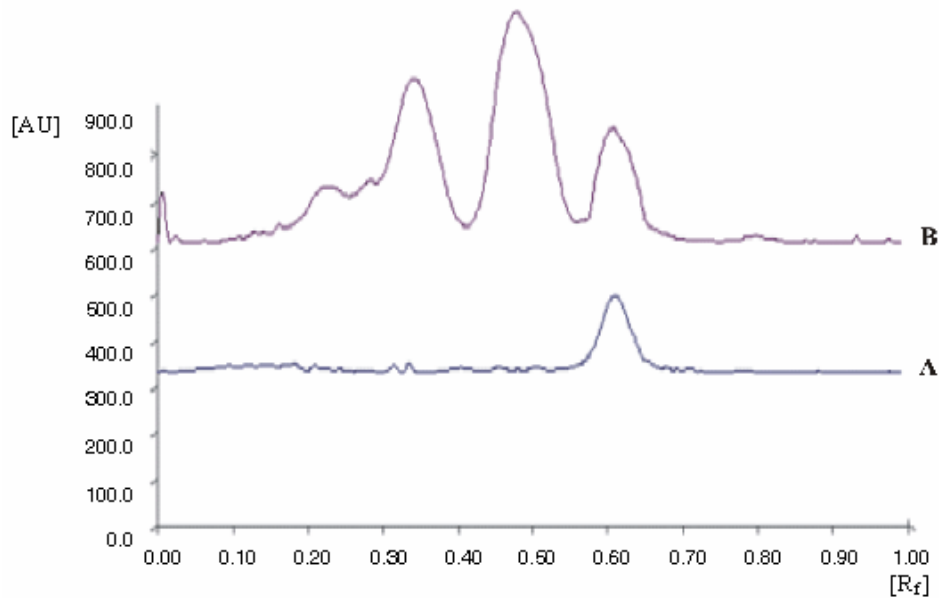


Oleanolic acid

### TLC/HPTLC Details



TLC profile of test solution of processed methanol extract of *Zizyphus jujuba* fruit pulp. **1:** Xylose standard; **2-4:** Test solution.



HPTLC densitometric scan at 440 nm.

**A.** Xylose standard; **B.** Test solution of processed methanol extract of *Zizyphus jujuba* fruit pulp.