

33 *Vernonia conyzoides* DC. (Sahadevi)

Drug consists of dried whole plant of *Vernonia conyzoides* DC. (syn. *V. cinerea* auct. non Less.) (A & B); Fam. Asteraceae. An erect, annual, branched herb, 13-80 cm high; found as a weed throughout India.



A. Plant



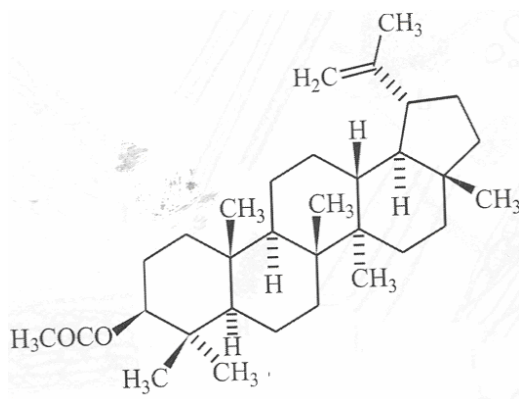
B. Dried plant

Vernonia conyzoides DC.

Chemical constituents

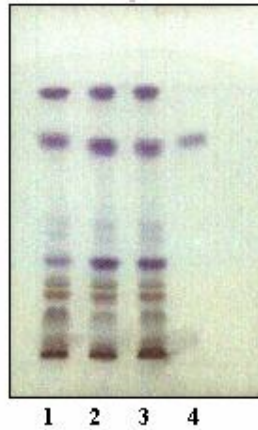
Major

Lupeol, lupeol acetate; luteolin-7-*O*-glucoside; stigmasterol- β -D-glucopyranoside, stigmasterol; dotriacontanoic acid.

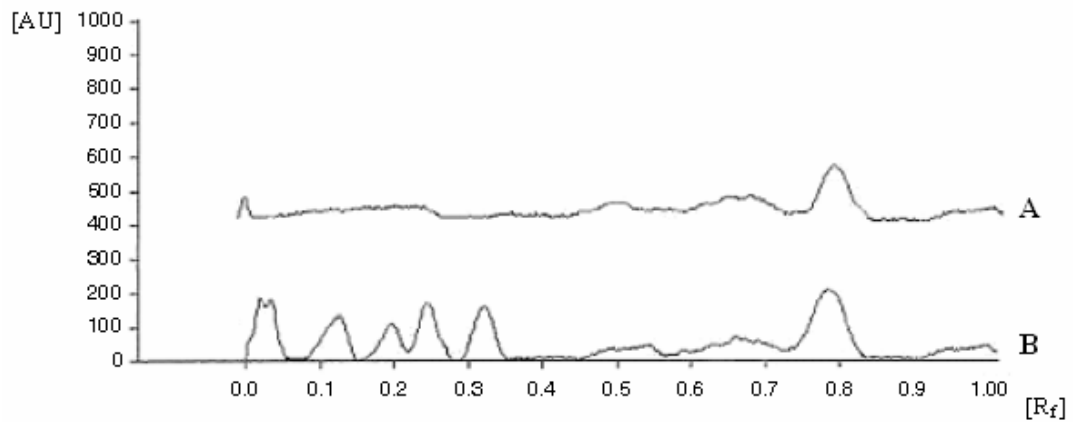


Lupeol acetate

TLC/HPTLC Details



TLC profile of test solution of chloroform extract of *Vernonia conyzoides* whole plant. **1-3:** Test solution; **4:** Lupeol acetate standard.



HPTLC densitometric scan at 190 nm. **A.** Lupeol acetate standard; **B.** Test solution of chloroform extract of *Vernonia conyzoides* whole plant.