

33 *Strychnos potatorum* Linn.f. (Kataka)

Drug consists of dried seed of *Strychnos potatorum* Linn. f. (A, B & C); Fam. Loganiaceae. The plant is a moderate sized glabrous tree attaining a height of 12 m, occurring in West Bengal, Orissa, Madhya Pradesh and southwards to Western Peninsula.



A. Tree



B. Fruiting branches of tree (inset – A fruit bearing twig)



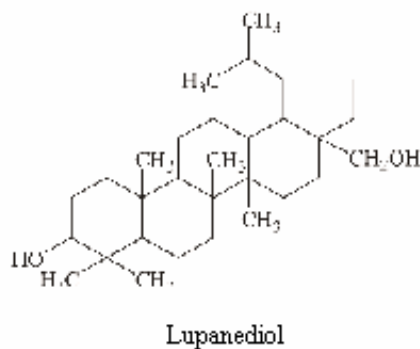
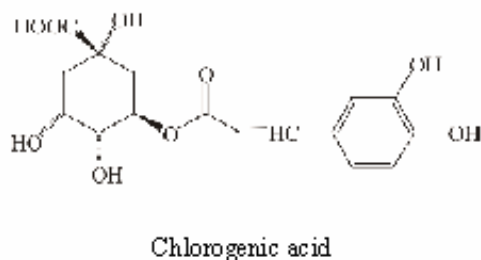
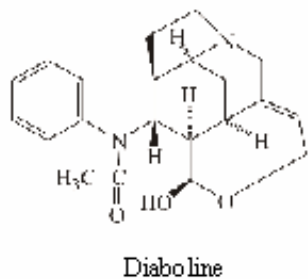
C. Dried seeds

Strychnos potatorum Linn.f.

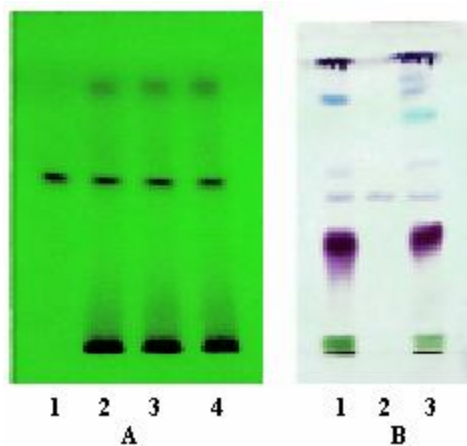
Chemical Constituents

Major

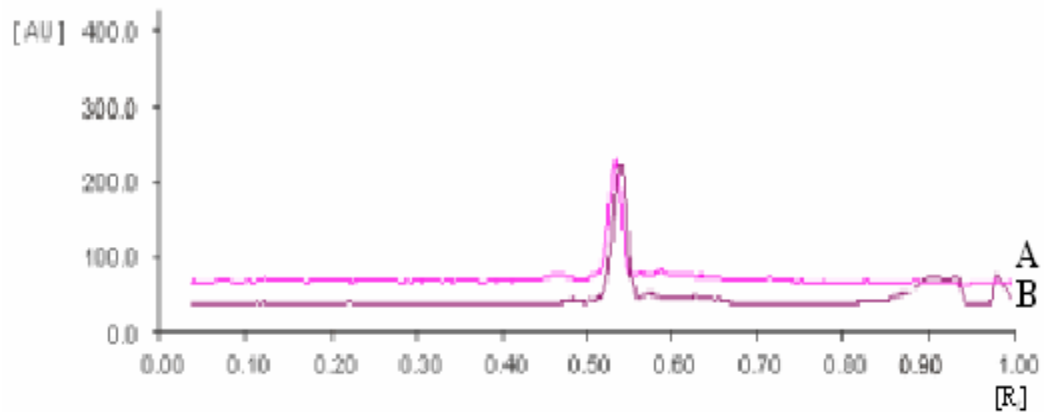
Diaboline, saponin glycoside having oleanolic acid as aglycone and D-galactose and D-mannose as sugar moieties, chlorogenic acid.



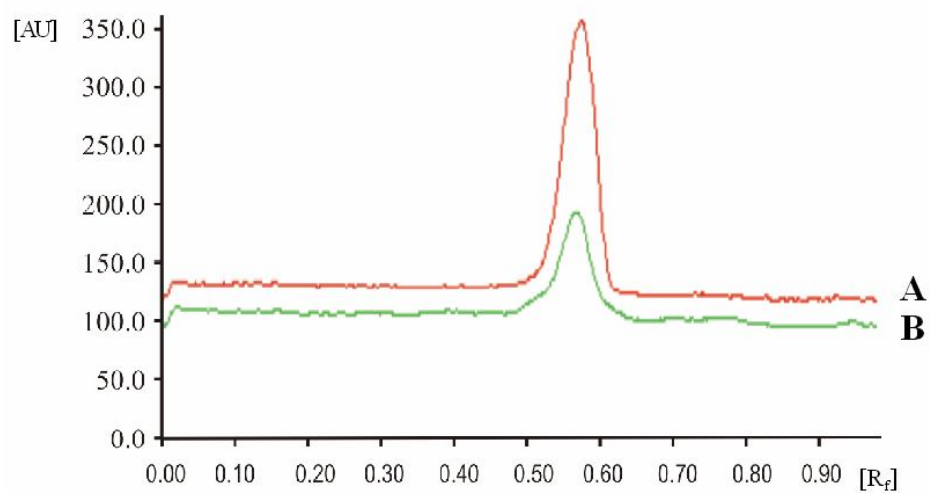
TLC/HPTLC Details



TLC profile of test solution of *Strychnos potatorum* seed. **A.** In solvent system I – UV 254 nm. **1:** Diaboline standard; **2-4:** Test solution. **B.** In solvent system II – After derivatization with anisaldehyde- sulphuric acid reagent. **1 & 3:** Test solution; **2:** Chlorogenic acid standard.



HPTLC densitometric scan at 254 nm. **A.** Diabolone standard; **B.** Test solution of *Strychnos potatorum* seed.



HPTLC densitometric scan at 333 nm. **A.** Chlorogenic acid standard; **B.** Test solution of *Strychnos potatorum* seed.