

## 32 *Stereospermum suaveolens* (Roxb.) DC. (Patala)

Drug consists of dried root of *Stereospermum suaveolens* (Roxb.) DC. (syn. *S. chelonoides* sensu Clarke, p.p. [non (Linn. f.) DC.]) (A & B); Fam. Bignoniaceae. A deciduous tree, 9 to 18 m high, distributed throughout India in dry localities.



A. Plant



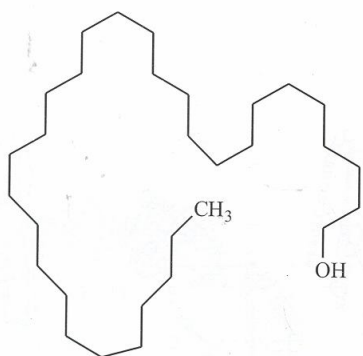
B. Dried root pieces

*Stereospermum suaveolens* (Roxb.) DC.

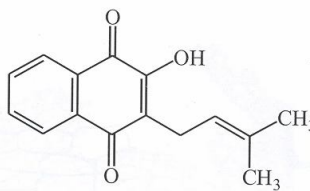
### Chemical Constituents

#### Major

Lapachol, triacontanol.

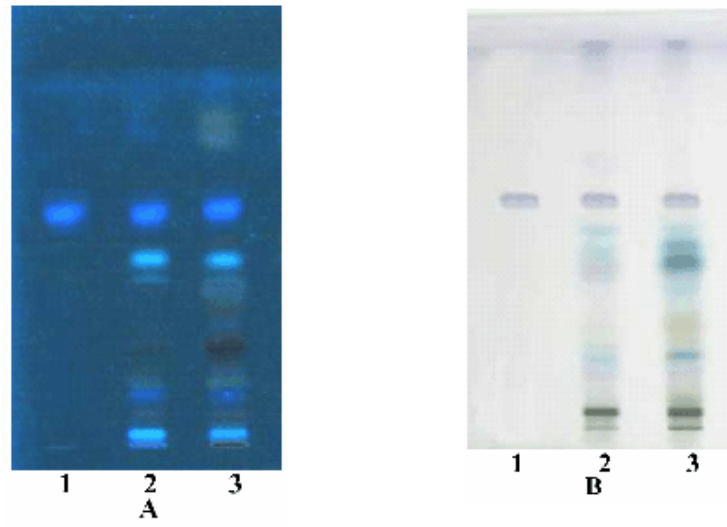


Triacontanol

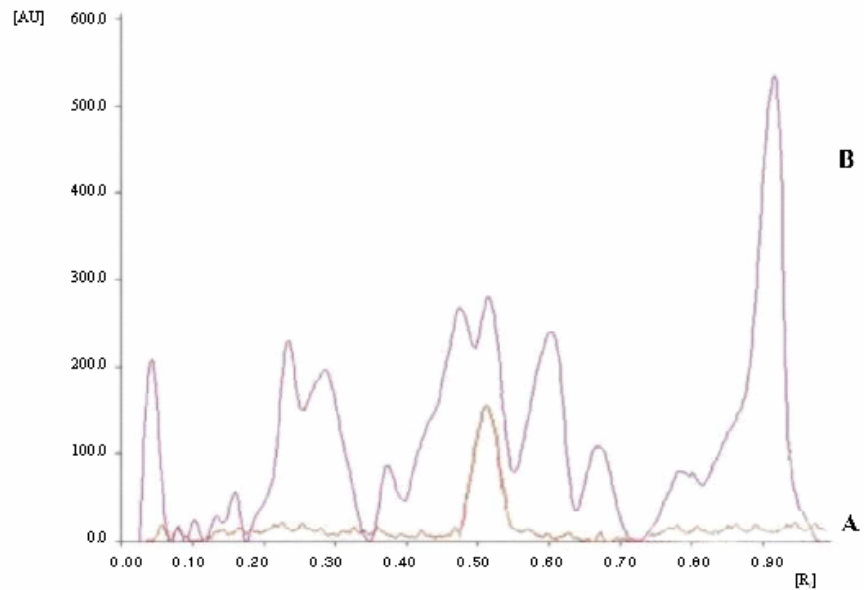


Lapachol

## TLC/HPTLC Details



TLC profile of test solution of *Stereospermum suaveolens* root. **A.** UV 366 nm; **B.** Under visible light after derivatization. **1:** Triacontanol standard; **2-3:** Test solution.



HPTLC densitometric scan at 516 nm. **A.** Triacontanol standard; **B.** Test solution of *Stereospermum suaveolens* root.