

32 *Psoralea corylifolia* Linn. (Bakuci)

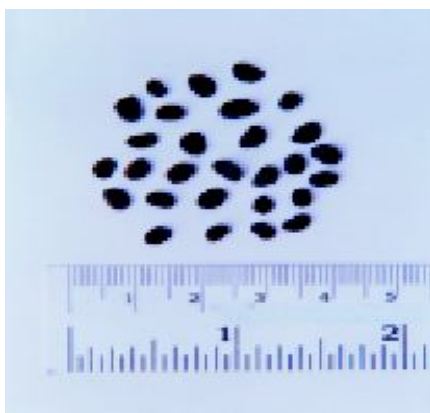
Drug consists of the dried fruit of *Psoralea corylifolia* Linn. (A, B, C & D); Fam. Fabaceae. The plant is a tall erect herb about 1 m height and distributed throughout India, in plains.



A. Aerial twig



B. Flowering twig



C. Dried fruits



With calyx



Without calyx

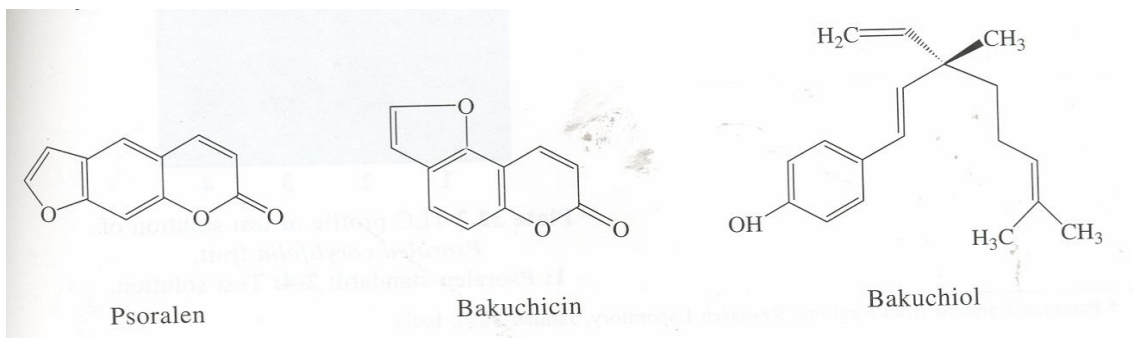
D. Dried fruits

Psoralea corylifolia Linn.

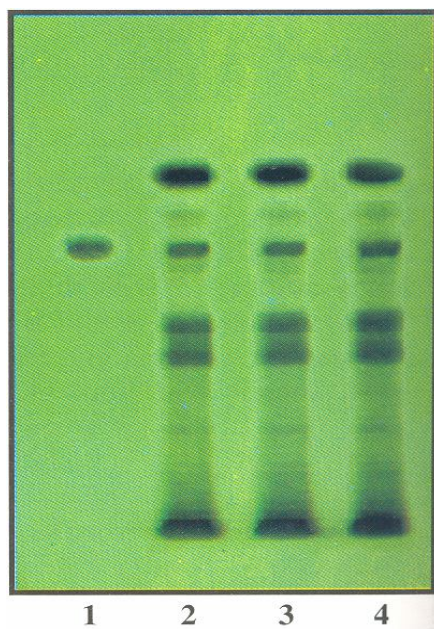
Chemical Constituents

Major

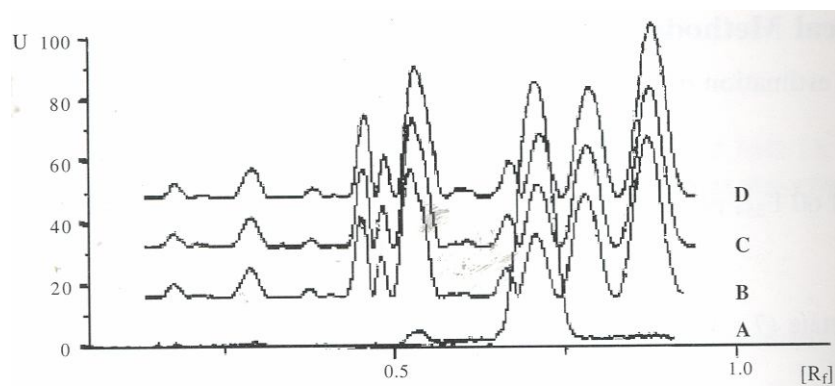
Psoralen¹⁻⁷, bakuchiol^{1,2,4,8-11} and bakuchicin^{1,4}.



TLC Details



TLC profile of test solution of *Psoralea corylifolia* fruit. **1:** Psoralen standard; **2-4:** Test solution.



TLC densitometric scan at **306 nm**. **A.** Psoralen standard; **B,C,D.** Test solution of *Psoralea corylifolia* fruit.

