

32 *Tamarindus indica* Linn.

(Ciñca)

Drug consists of dried ripe fruit of *Tamarindus indica* Linn. freed from the outer brittle pericarp, seeds and fibrovascular strands of the mesocarp (representing fruit pulp only) (A, B & C); Fam. Caesalpiniaceae. An evergreen large tree, distributed throughout the hotter parts of India including sub-Himalayan tracts.



A. Flowering twig



B. Dried fruit



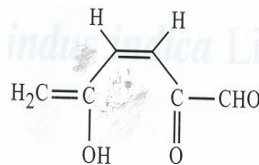
C. Dried fruit exhibiting pulp, vascular strands and seeds

Tamarindus indica Linn.

Chemical Constituents

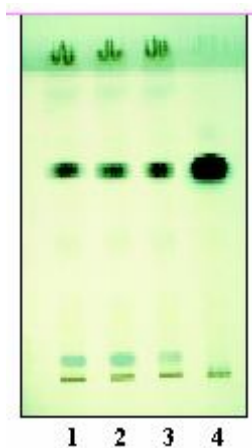
Major

Tamarindienal, tartaric acid.

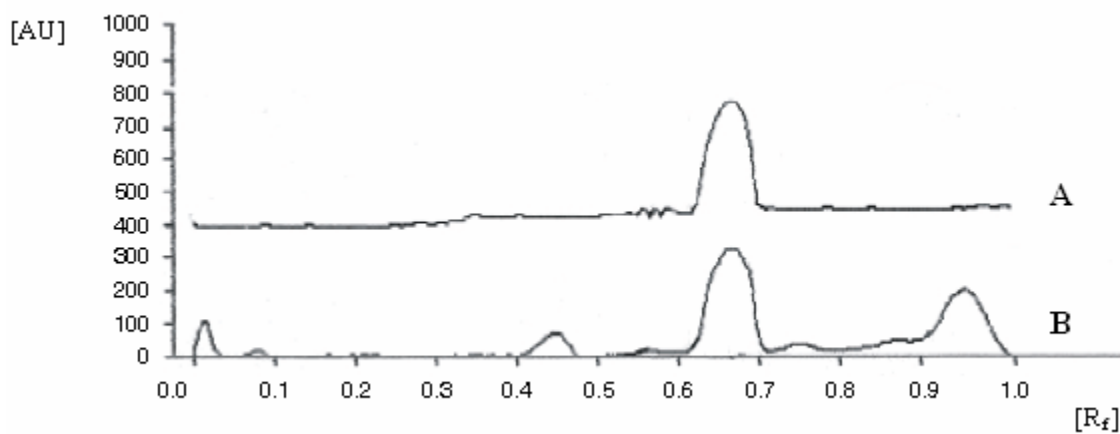


Tamarindienal

TLC/HPTLC Details



TLC profile of test solution of chloroform extract of *Tamarindus indica* fruit pulp. **1-3:** Test solution; **4:** Tamarindial standard.



HPTLC densitometric scan at 254 nm. **A.** Tamarindial standard; **B.** Test solution of chloroform extract of *Tamarindus indica* fruit pulp.