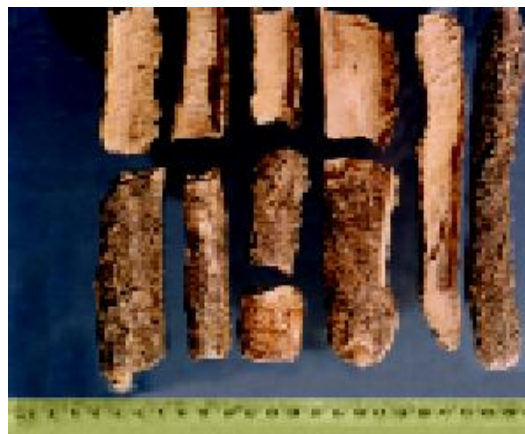


31 *Thevetia peruviana* (Pers.) K.Schum. (Pitakaravirah)

Drug consists of dried root bark of *Thevetia peruviana* (Pers.) K.Schum. (A & B) (syn. *Thevetia neriifolia* Juss. ex Steud.); Fam. Apocynaceae. The plant is a large evergreen shrub, 4.5 to 6.0 m tall. A native to tropics of America and West Indies. In India, it is grown throughout the plains¹.



A. Flowering plant



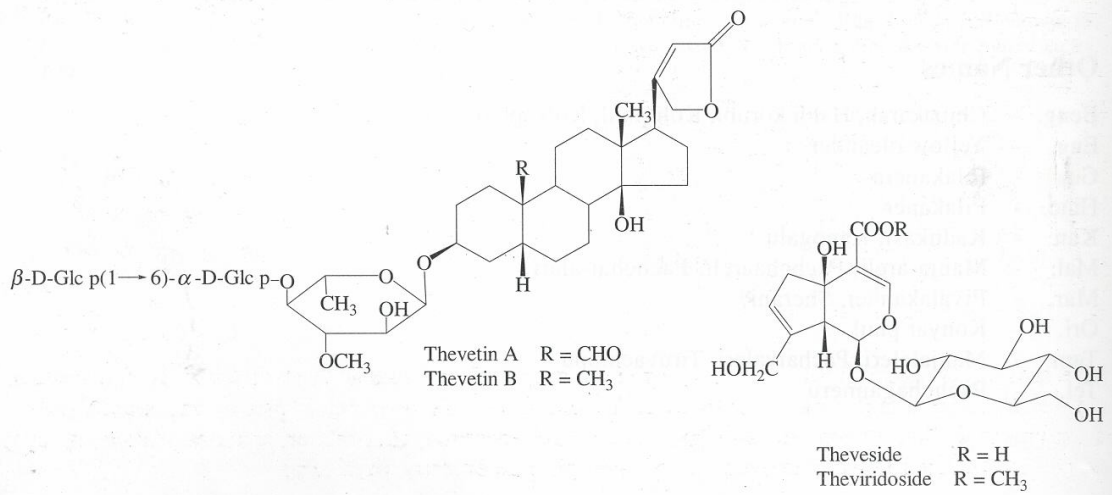
B. Dried root bark

Thevetia peruviana (Pers.) K.Schum.

Chemical Constituents

Major

Cardiac glycosides: thevetin (= thevetoside) [a mixture of thevetin A and thevetin B (= cerberoside)].



TLC/ HPLC Details

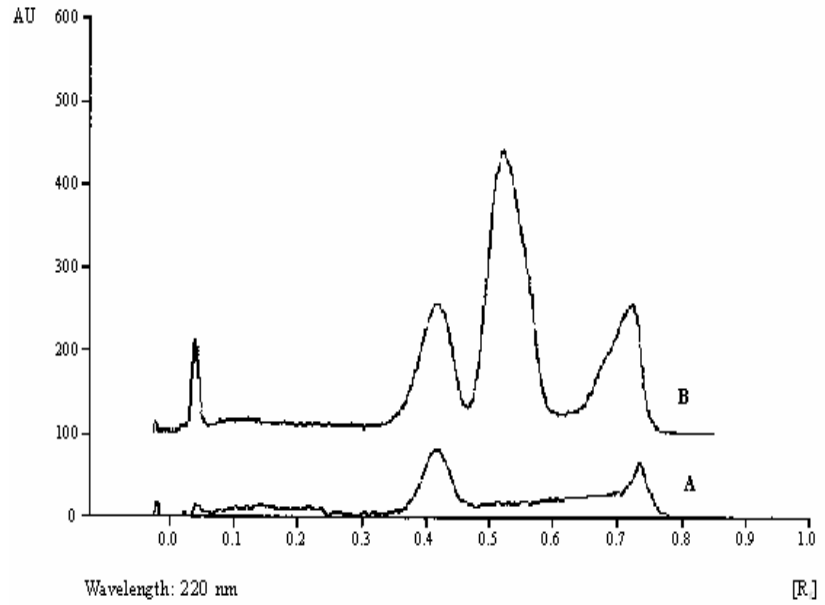
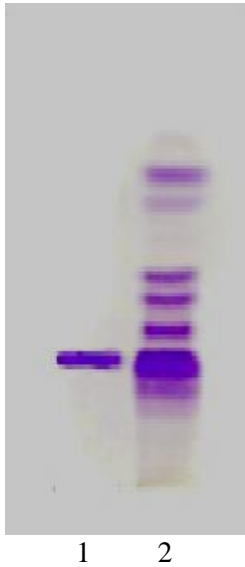


Plate 31.2 TLC profile of test solution of *Thevetia peruviana* root bark extract.
1: Thevetin B standard;
2: Test solution.

TLC densitometric scan at 220 nm.
A. Thevetin standard
B. Test solution of *Thevetia peruviana* root bark extract.