

# 31 *Shorea robusta* Gaertn.

(Sala)

Drug consists of dried stem bark of *Shorea robusta* Gaertn. (A & B); Fam. Dipterocarpaceae. A large subdeciduous tree found extensively in tropical Himalayas, North-eastern and Central India and West Bengal hills.



A. A twig



B. Dried stem bark

a. Outer surface

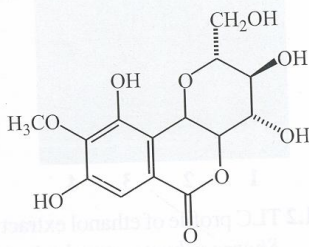
b. Inner surface

*Shorea robusta* Gaertn

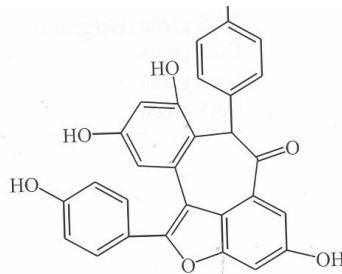
## Chemical Constituents

### Major

Bergenin.

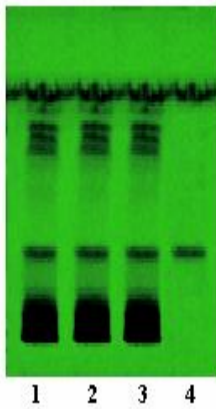


Bergenin

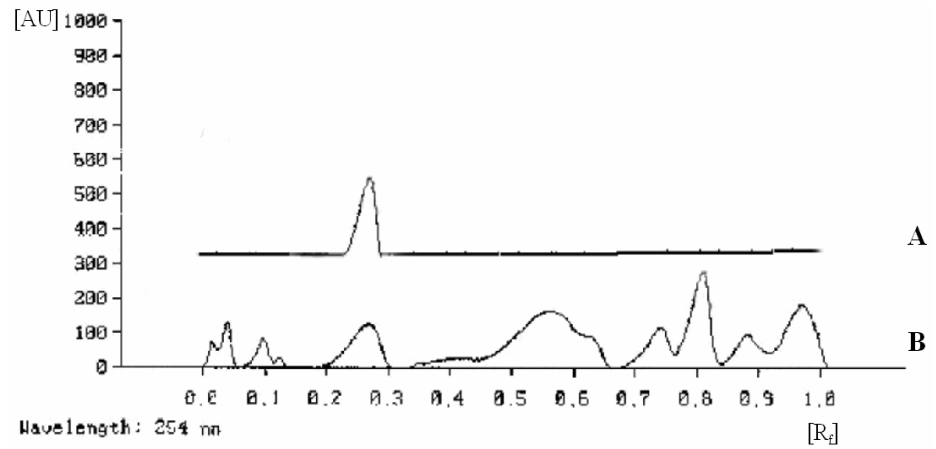


Shoreaphenol

## TLC/HPTLC Details



TLC profile of ethanol extract of *Shorea robusta* stem bark. **1-3:** Test solution; **4:** Bergenin standard.



HPTLC densitometric scan at 254 nm. **A.** Bergenin standard; **B.** Test solution of *Shorea robusta* stem bark.