

31 *Syzygium cumini* (Linn.) Skeels (Jambu)

Drug consists of dried seed of *Syzygium cumini* (Linn.) Skeels (A & B); Fam. Myrtaceae. It is a large evergreen tree, growing up to a height of 15-30 m; found throughout the country, in the forests up to 1,800 m, especially in moist localities and also cultivated as an avenue tree along the road sides.



A. Twig



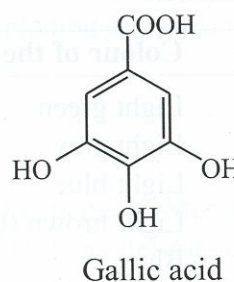
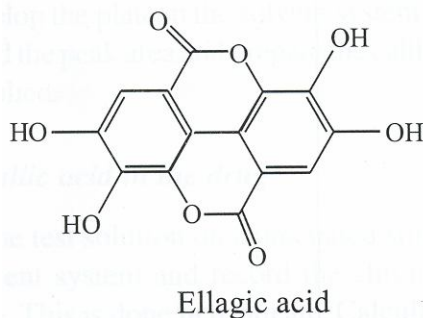
B. Seeds

Syzygium cumini (Linn.) Skeels

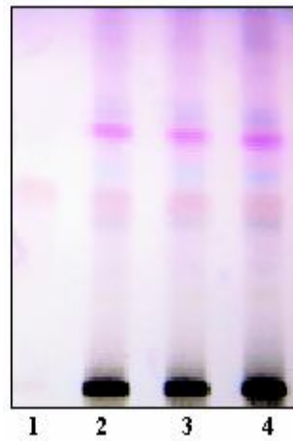
Chemical Constituents

Major

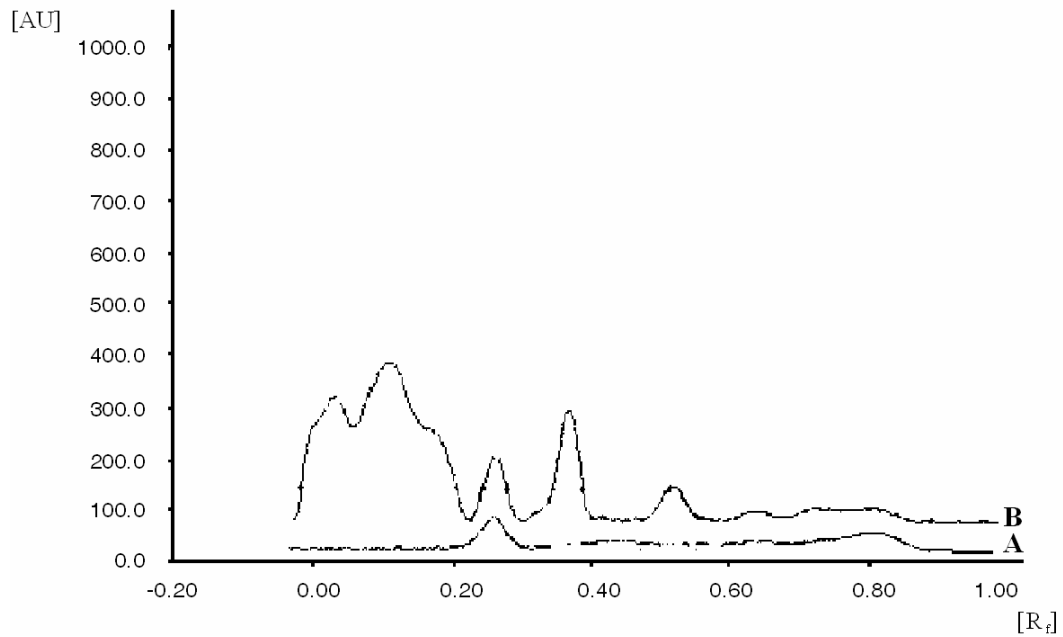
Tannins (which on hydrolysis give corilagin, gallic acid, ellagic acid and glucose), corilagin, ellagic acid, gallic acid (free form), 3,6-hexahydroxydiphenyl-glucose, 4,6-hexahydroxydiphenyl-glucose, 1-galloyl glucose, 3-galloyl glucose, 3,3'-di-*O*-methyl ellagic acid, 3,3',4-tri-*O*-methyl ellagic acid; quercetin. Seed oil contains lauric, myristic, palmitic, stearic, oleic, linoleic, malvalic, sterculic and vernolic acids.



TLC/HPTLC Details



TLC profile of test solution of processed methanol extract of *Syzygium cumini* seed kernel. **1:** Gallic acid standard; **2- 4:** Test solution.



HPTLC densitometric scan at 280 nm. **A.** Gallic acid standard; **B.** Test solution of processed methanol extract of *Syzygium cumini* seed kernel.